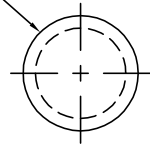
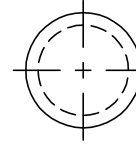
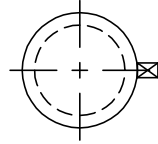


22" FLGD. MANWAY
w/ BLANK COVER
(3 TYP.)

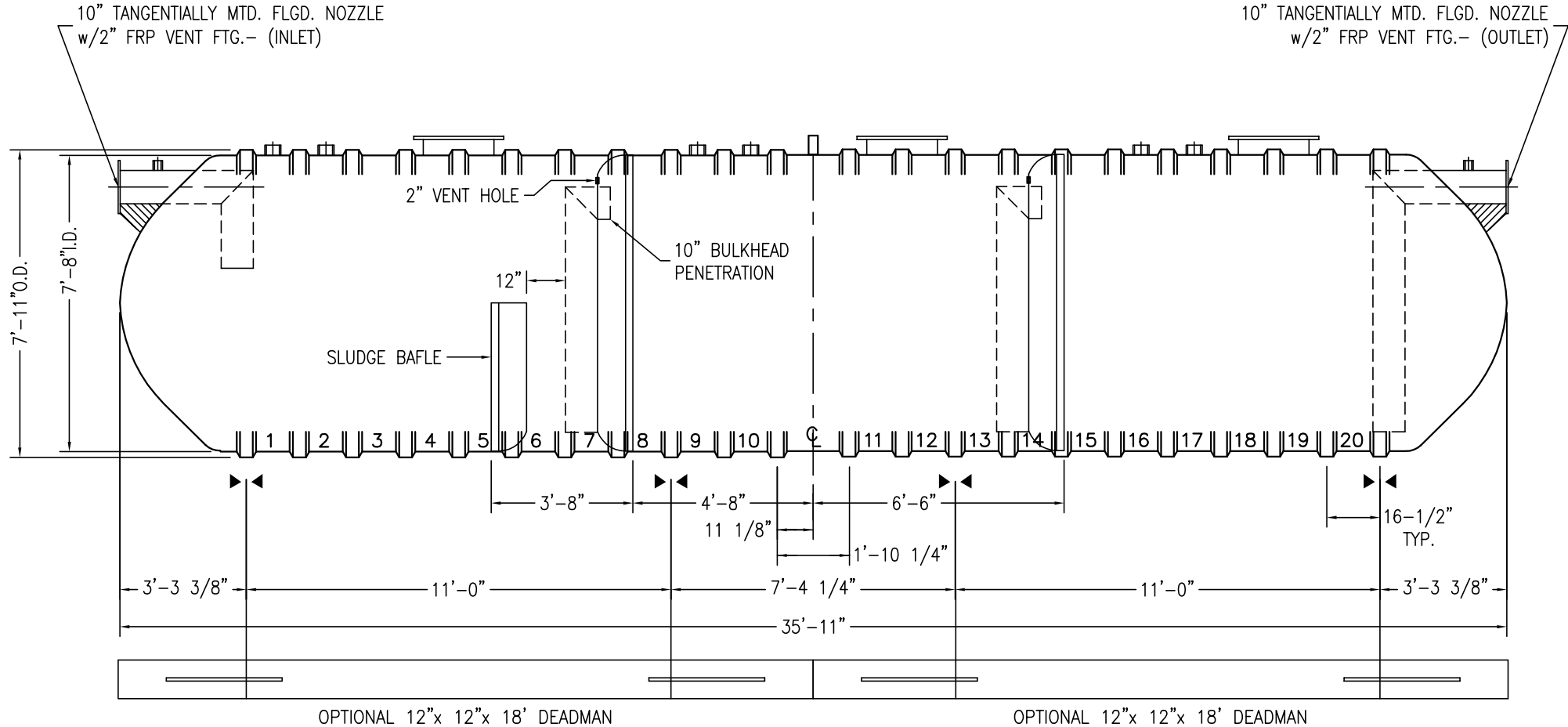


4" NPT FTGS. (6 TYP.)



10" TANGENTIALLY MTD. FLGD. NOZZLE
w/2" FRP VENT FTG.- (INLET)

10" TANGENTIALLY MTD. FLGD. NOZZLE
w/2" FRP VENT FTG.- (OUTLET)



OPTIONAL 12"x 12"x 18' DEADMAN

OPTIONAL 12"x 12"x 18' DEADMAN

NOTES:

- ☒ HOLD DOWN STRAP CLIP
- ▶◀ HOLD DOWN STRAP LOCATION
- TOP MOUNTED LIFT LUG
- ◐ SIDE MOUNTED LIFT LUG

SWT (8')-12000 CSI-3B INT		DATE:	1/1/2014
		DRAWN BY:	K.A.SOEDER
	CAPACITY: SLUDGE/TOTAL 207/11595	REVISED:	
	WEIGHT: DRY/WET 4055	DWG NUMBER:	812-3BSW