
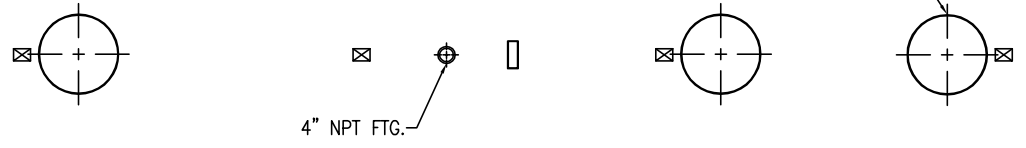


FLOWTITE PRODUCTS
 SEPTIC / WASTE WATER
 NOTE: CUSTOMER SUPPLIED
 "ASTM C-1644" APPROVED
 FLEXIBLE PIPING COUPLING
 REQUIRED ON TANGENTIALLY
 MTD. NOZZLES, & PIPES

(24") 23-1/2" O.D. FRP ACCESS COLLAR
 w/ADHESIVE CHANNEL &
 22 1/2" TANK TOP CUT-OUT(3 TYP.)

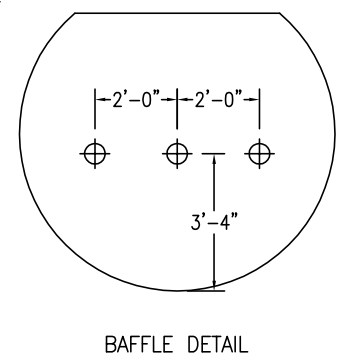
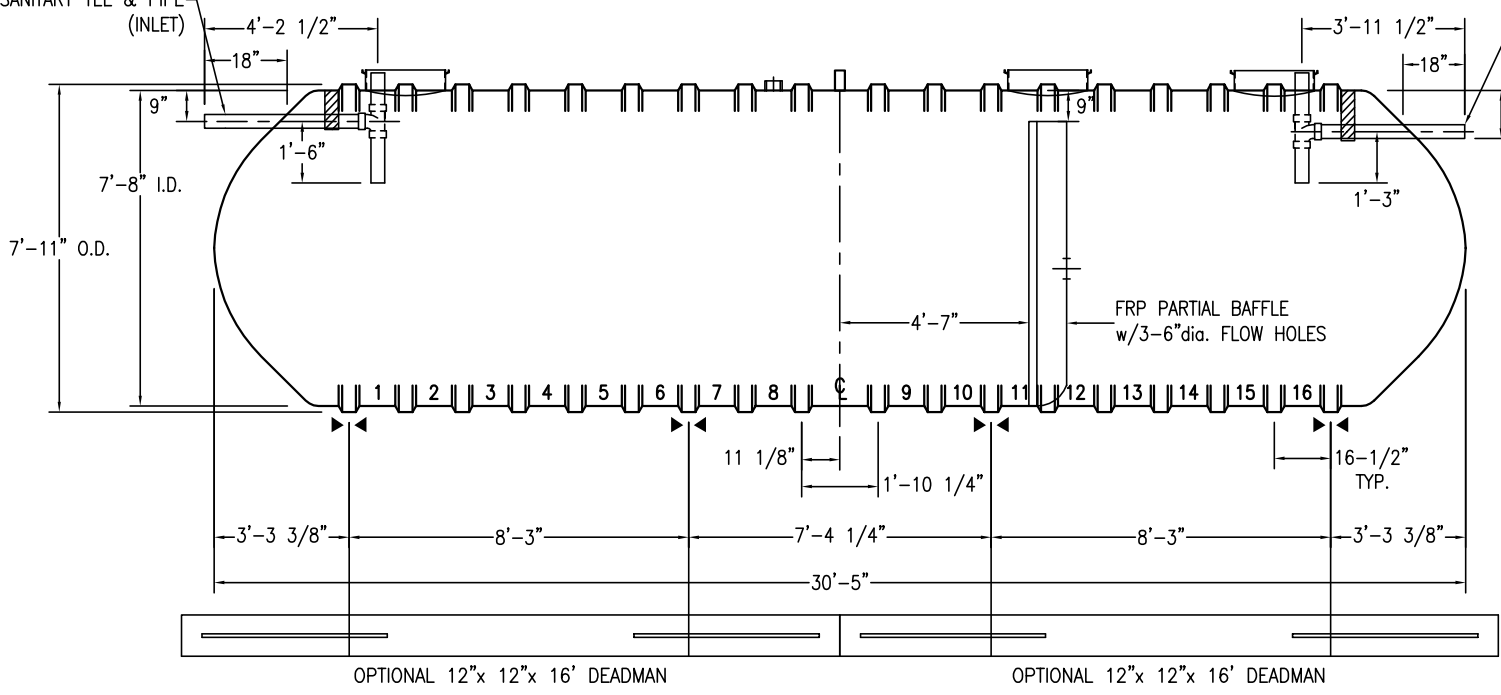
 THIS IS AN IAPMO APPROVED TANK
 THE ONLY CHANGE ALLOWED TO
 THIS TANK IS TO INCREASE THE
 INLET AND OUTLET PIPE DIAMETER.
 MFG. PER. PE-C22.85

CAPACITIES:
 LIQUID VOLUME BELOW OUTLET = 8781 GALS
 AIR VOLUME ABOVE OUTLET = 915 GALS



4" SCH-40 PVC STUB-OUT
 w/SANITARY TEE & PIPE
 (INLET)

4" SCH-40 PVC STUB-OUT
 w/SANITARY TEE & PIPE
 (OUTLET)



- NOTES:**
- ☒ HOLD DOWN STRAP CLIP
 - ▶◀ HOLD DOWN STRAP LOCATION
 - TYPE "13" LIFT LUG - SD
 - TYPE "13" LIFT LUG - HD

SWT G-6 (8')-10000		DATE:	1/1/2014
IAPMO SEPTIC TANK		DRAWN BY:	J.HARMON
CONTAINMENT SOLUTIONS	CAPACITY:	9,696	
	WEIGHT: DRY/WET	2,900	
		REVISED:	
		DWG NUMBER:	810MSW-IS