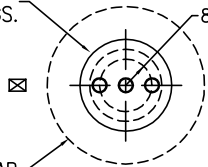
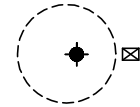


22" FLGD. MANWAY
w/3-4" NPT FTGS.



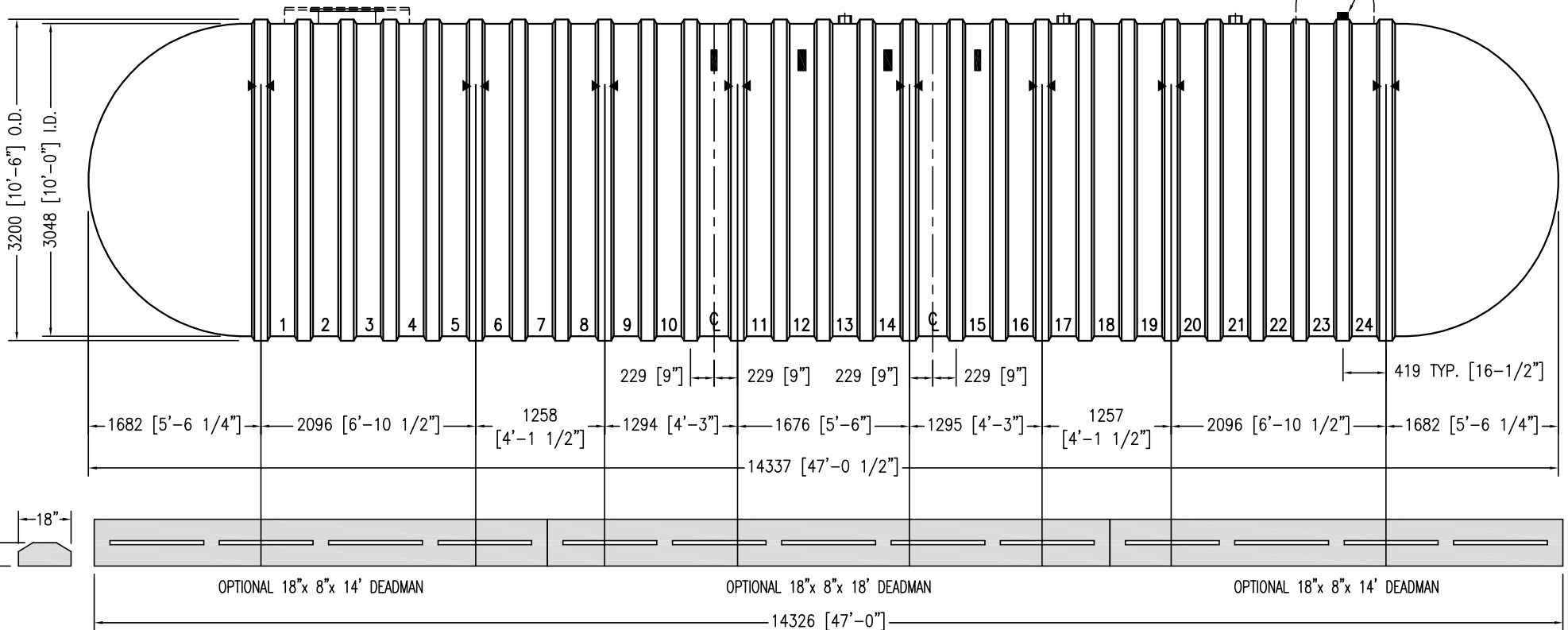
OPTIONAL 48" CONTAINMENT COLLAR

4" NPT FTGS. (3 TYP.)



OPTIONAL RESERVOIR

4" ANNULAR SPACE FTG.



NOTES:



- ▶ ◀ HOLD DOWN STRAP LOCATION
- TYPE "13" LIFT LUG - SD
- TYPE "13" LIFT LUG - HD
- UNLESS NOTED-ALL DIMS ARE IN mm

CUSTOMER:

APPROVAL SIGNATURE / DATE:

DWG NUMBER:

X95MLDW-CN

DRAWN BY:

K.A.SOEDER

Model DWT6 10-95000 L
Double Wall Fiberglass CUL Tank

CAPACITY: LITERS / GALLONS

96,744 / 25,557

WEIGHT: KILOS / POUNDS

8,025 / 17,650

DATE:

1/1/2014

CONTAINMENT SOLUTIONS

www.containmentsolutions.com

1-877-CSI-TANK