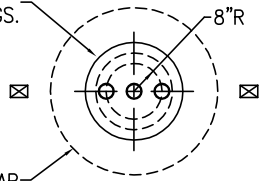


22" FLGD. MANWAY
w/3-4" NPT FTGS.

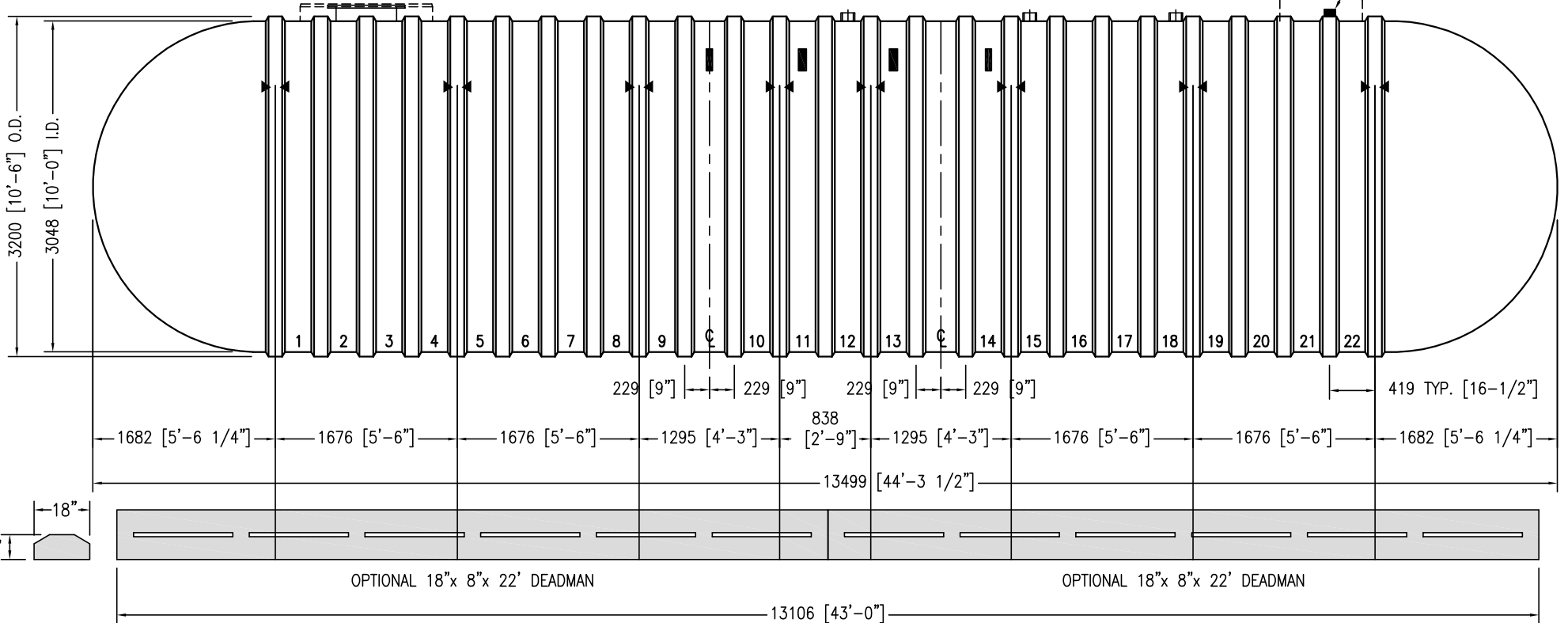


OPTIONAL 48" CONTAINMENT COLLAR

4" NPT FTGS. (3 TYP.)

OPTIONAL RESERVOIR

4" ANNULAR SPACE FTG.



NOTES:



- ▶◀ HOLD DOWN STRAP LOCATION
- TYPE "13" LIFT LUG - SD
- TYPE "13" LIFT LUG - HD
- UNLESS NOTED-ALL DIMS ARE IN mm

CUSTOMER:

APPROVAL SIGNATURE / DATE:

DWG NUMBER:

X90MLDW-CN

DRAWN BY:

K.A.SOEDER

**Model DWT6 10-90000 L
Double Wall Fiberglass CUL Tank**

CAPACITY: LITERS / GALLONS

90,630 / 23,942

WEIGHT: KILOS / POUNDS

7,500 / 16,500

DATE:

1/1/2014



www.containmentsolutions.com

1-877-CSI-TANK