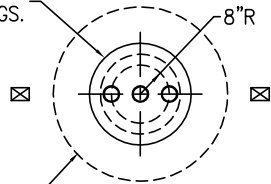
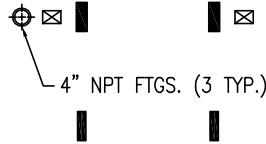


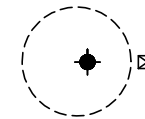
22" FLGD. MANWAY
w/3-4" NPT FTGS.



OPTIONAL 48" CONTAINMENT COLLAR

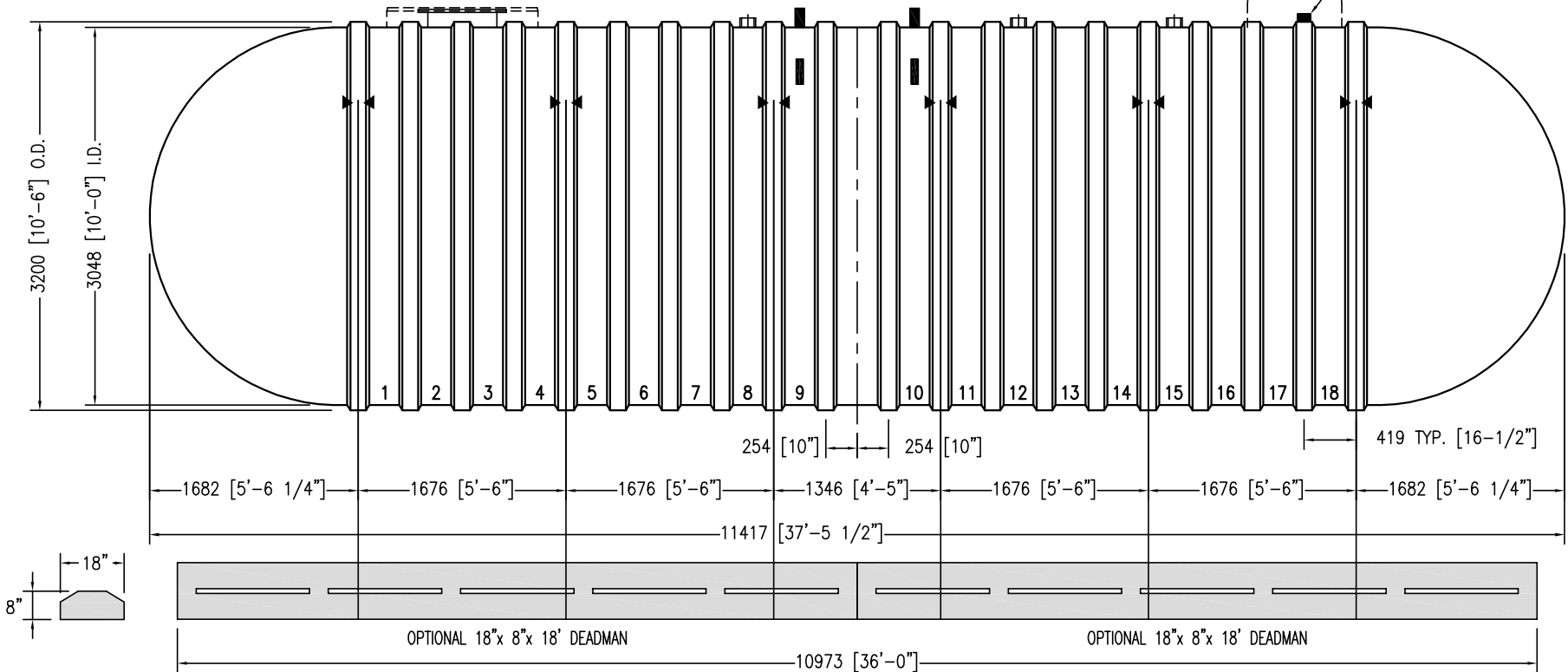


4" NPT FTGS. (3 TYP.)



OPTIONAL RESERVOIR

4" ANNULAR SPACE FTG.



NOTES:



◄◄ HOLD DOWN STRAP LOCATION

- TYPE "13" LIFT LUG - SD
 - TYPE "13" LIFT LUG - HD
- UNLESS NOTED-ALL DIMS ARE IN mm

CUSTOMER:

APPROVAL SIGNATURE / DATE:

DWG NUMBER:

X75MLDW-CN

DRAWN BY:

K.A.SOEDER

CAPACITY: LITERS / GALLONS

75,523 / 19,951

WEIGHT: KILOS / POUNDS

6,150 / 13,550

DATE:

1/1/2014

Model DWT6 10-75000 L
Double Wall Fiberglass CUL Tank



www.containmentsolutions.com

1-877-CSI-TANK