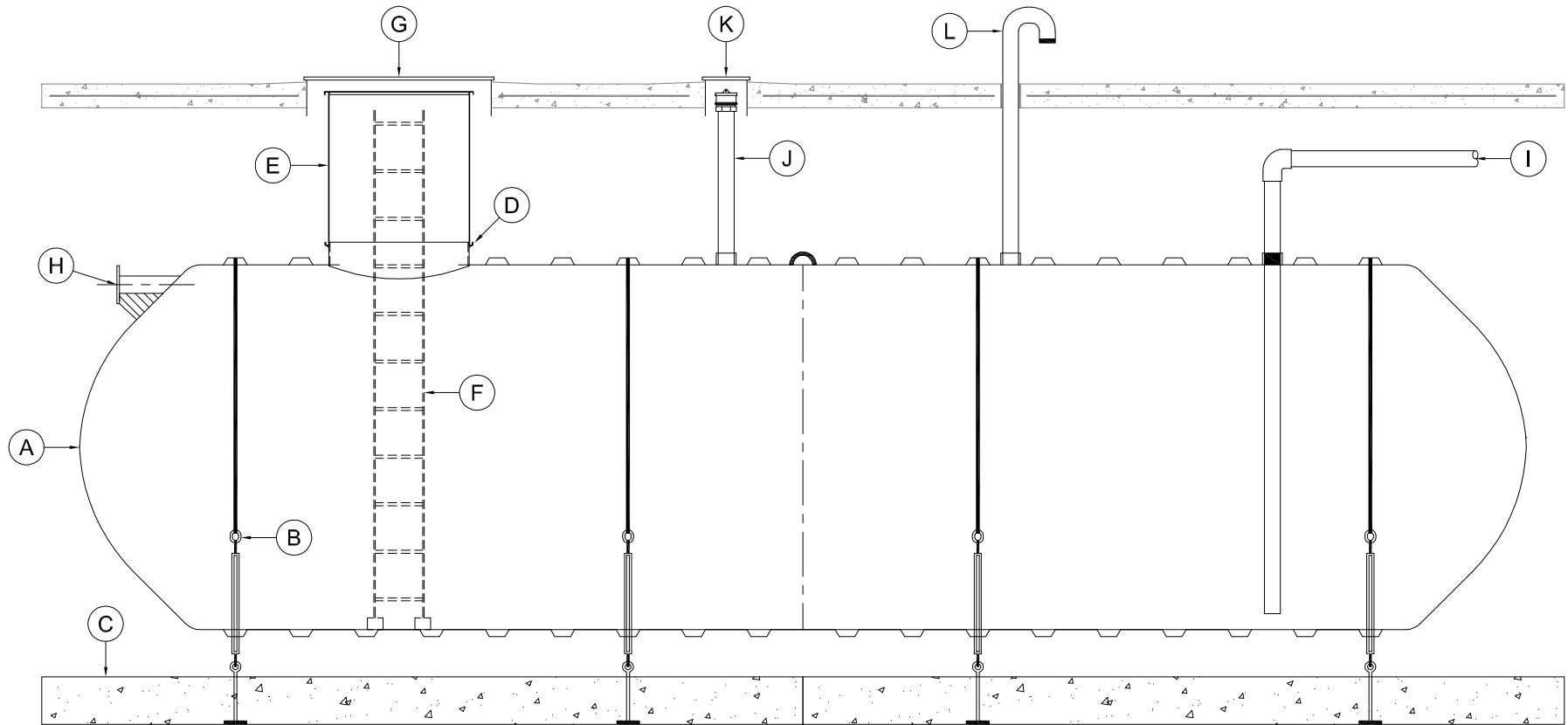


MARK	EQUIPMENT LISTING AND SUPPLIER	CSI	CUSTOMER	MARK	EQUIPMENT LISTING AND SUPPLIER	CSI	CUSTOMER
A	C.S.I. NSF-61 CERTIFIED SINGLE WALL FIBERGLASS TANK	X		G	48" DIAMETER MANHOLE AND COVER		X
B	C.S.I. FRP HOLD DOWN STRAP & TURNBUCKLE ASSEMBLY	X		H	4" TANGENTIALLY MOUNTED FLANGED NOZZLE - INLET	X	
C	C.S.I. PRECAST DEADMAN ANCHOR WITH EYEBOLTS	X		I	4" NPT FITTING WITH FRP SUCTION PIPE - OUTLET	X	
D	35.5" FIBERGLASS COLLAR WITH TANK ACCESS OPENING	X		J	4" NPT FITTING WITH RISER PIPE - FILL / GAUGE		X
E	36" FRP RISER WITH COVER	X		K	12" DIAMETER MANHOLE AND COVER		X
F	NFS-61 CERTIFIED FRP LADDER	X		L	4" NPT FITTING - TANK VENT	X	



THIS DRAWING IS FOR ILLUSTRATIVE PURPOSES ONLY. IT IS THE RESPONSIBILITY OF THE PURCHASER AND/OR ENGINEER TO DESIGN A SYSTEM IN COMPLIANCE WITH ALL GOVERNING MUNICIPAL CODES.

**TYPICAL ILLUSTRATION DRAWING**  
**VERTICAL SUPPLY POTABLE WATER**  
**NSF-61 CERTIFIED**

