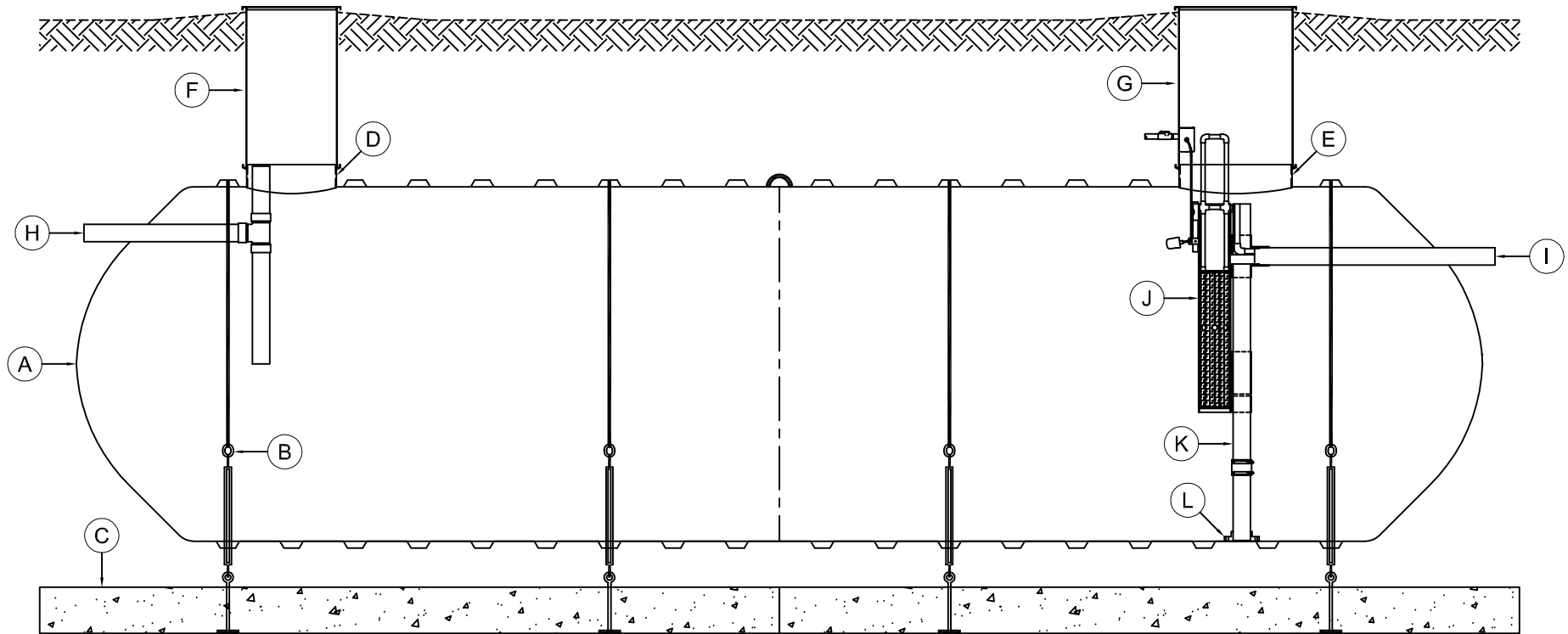


MARK	EQUIPMENT LISTING AND SUPPLIER	CSI	CUSTOMER	MARK	EQUIPMENT LISTING AND SUPPLIER	CSI	CUSTOMER
A	C.S.I. SINGLE WALL FIBERGLASS TANK	X		G	30" FRP RISER WITH COVER	X	
B	C.S.I. FRP HOLD DOWN STRAP & TURNBUCKLE ASSEMBLY	X		H	4" PVC INLET PIPING WITH SANITARY TEE	X	
C	C.S.I. PRECAST DEADMAN ANCHOR WITH EYEBOLTS	X		I	4" PVC OUTLET PIPING ASSEMBLY	X	
D	23.5" FIBERGLASS COLLAR WITH TANK ACCESS OPENING	X		J	SEPTIC FILTER WITH HIGH LEVEL FLOAT ASSEMBLY		X
E	29.5" FIBERGLASS COLLAR WITH TANK ACCESS OPENING	X		K	4" PVC SLIDE RAIL ASSEMBLY WITH FLEXIBLE CONNECTOR		X
F	24" FRP RISER WITH COVER	X		L	TANK BOTTOM MOUNTING BRACKET		X



THIS DRAWING IS FOR ILLUSTRATIVE PURPOSES ONLY. IT IS THE RESPONSIBILITY OF THE PURCHASER AND/OR ENGINEER TO DESIGN A SYSTEM IN COMPLIANCE WITH ALL GOVERNING MUNICIPAL CODES.

TYPICAL ILLUSTRATION DRAWING
SMALL COMMERCIAL ONSITE SEPTIC
GRAVITY EFFLUENT FILTER SYSTEM

