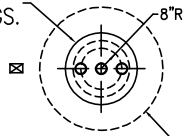


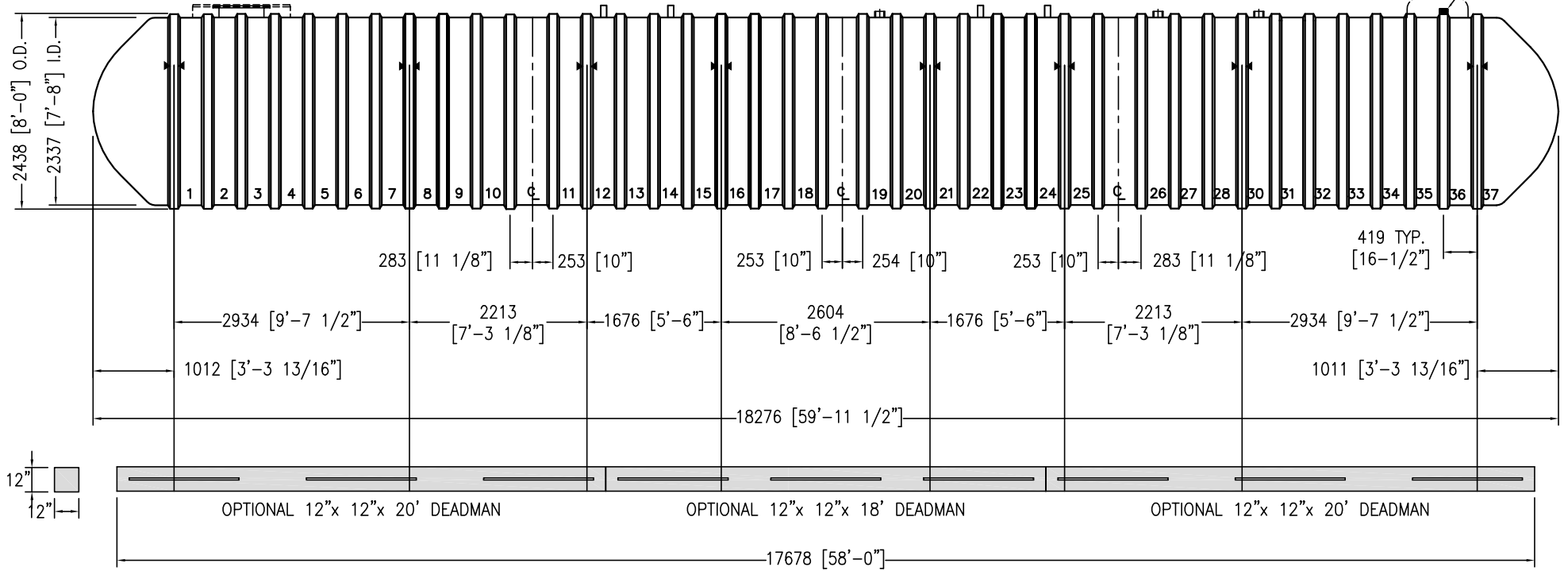
22" FLGD. MANWAY  
w/3-4" NPT FTGS.



OPTIONAL  
48" CONTAINMENT COLLAR

4" NPT FTGS. (3 TYP.)

OPTIONAL RESERVOIR  
4" ANNULAR SPACE FTG.



NOTES:



▶ ◀ HOLD DOWN STRAP LOCATION

- ▣ TYPE "13" LIFT LUG - SD
  - ▣ TYPE "13" LIFT LUG - HD
- UNLESS NOTED-ALL DIMS ARE IN mm

CUSTOMER:

APPROVAL SIGNATURE / DATE:

DWG NUMBER:

875MLDW-CN

DRAWN BY:

K.A.SOEDER

## Model DWT6 8-75000 L Double Wall Fiberglass CUL Tank

CAPACITY: LITERS / GALLONS

75,155 / 19,854

WEIGHT: KILOS / POUNDS

6,200 / 13,650

DATE:

1/1/2014



www.containmentsolutions.com

1-877-COI-TANK