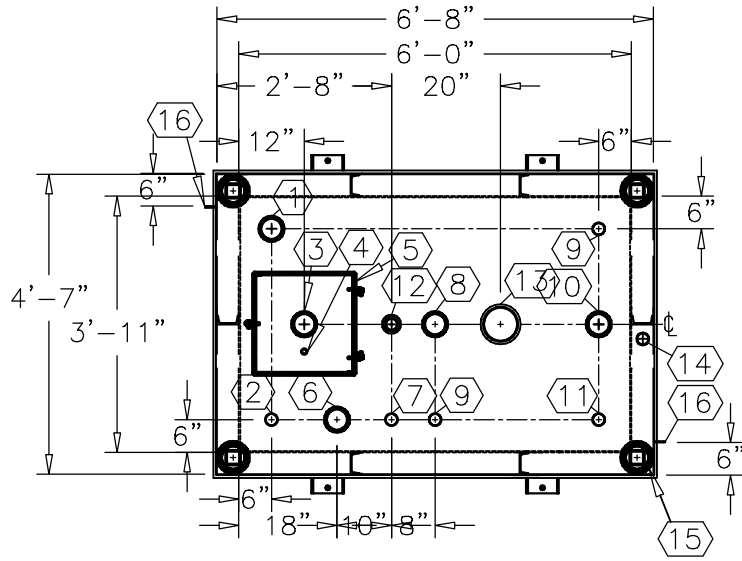


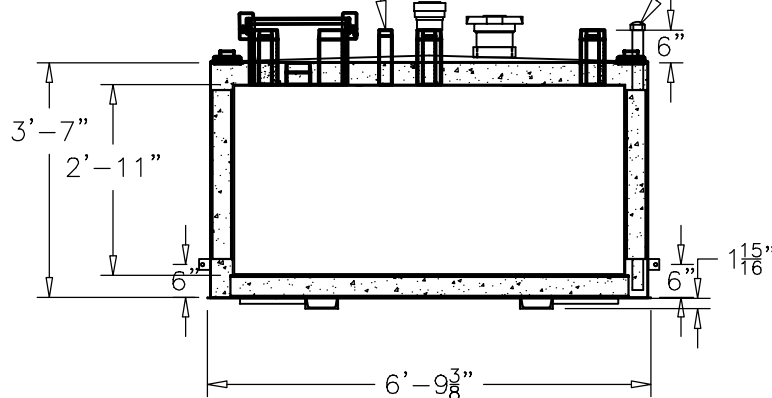
**NOTE:**  
**OVERALL SHIPPING DIMENSION: 7'-1" L X 5'-2" W X 4'-7" H**



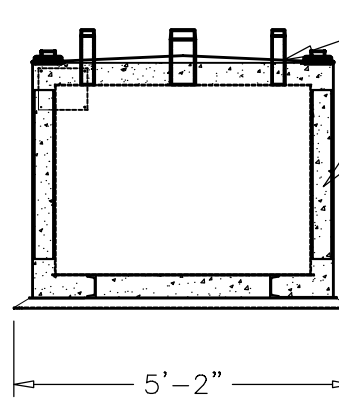
**TOP VIEW**

THREADED CONNECTION  
 (TYP.) SEE TOP VIEW

2" STD. PIPE FOR  
 MONITOR ACCESS



**ELEVATION**



**END VIEW**

ITEM	SIZE	SUGGESTED FUNCTION
1	4"	PHASE 1 VAPOR RECOVERY/SPARE
2	2"	MECHANICAL GAUGE
3	4"	FILL
4	1/2"	DRAIN FOR SPILLBOX
5	15 GAL.	SPILLBOX, DWG."SBB001"
6	4"	ELECTRONIC LEVEL GAUGE
7	2"	PRIMARY WORKING VENT
8	4"	PRIMARY TANK EMERGENCY VENT
9	2"	SPARE
10	4"	SUBMERSIBLE PUMP
11	2"	SUCTION PUMP/SPARE
12	2"	SECONDARY WORKING VENT
13	6"	SECONDARY CONTAINMENT EMERGENCY VENT
14	2"	SECONDARY MONITOR PIPE
15	4"	FIRE RATED MATERIAL FILL
16	2" X 2"	GROUND CLIP, DWG."MCB004"

**TANK SPECIFICATIONS**

VENTING CAPACITY: PRIMARY TANK - 94,800 CUBIC FEET PER HOUR  
 SECONDARY TANK - 126,000 CUBIC FEET PER HOUR

MATERIAL: PRIMARY TANK - 3/16" THICK  
 SECONDARY TANK - 3/16" THICK

SEAL WELD ALL  
 FITTINGS AND TANK

4" SPACE BETWEEN  
 INNER & OUTER TANKS  
 FILLED WITH LIGHT WEIGHT  
 FIRE-RATED MATERIAL

PRODUCT CODE	GALLONS	DESCRIPTION	OVERALL SIZE	SHIP WT.
V4AA1500VS001	500	U/L-2085 ABOVE GROUND VAULT TANK W/SPILLBOX	6'-8" L X 4'-7" W X 3'-9" H	5,400 LBS.
THIS DRAWING AND DESIGN SHOWN HEREIN IS THE PROPERTY OF CONTAINMENT SOLUTIONS. USE OR COPIES THEREOF CANNOT BE MADE WITHOUT WRITTEN CONSENT.				
CUSTOMER NAME		<b>APPROVED</b> BY: _____	DATE: _____	

**CONTAINMENT SOLUTIONS®**

DRAWN BY: D. ROVANG      DATE DRAWN: 01-01-14  
 DWG NUMBER: 5100001      SCALE: 1:36  
 REV:      REV BY:      DATE:      SHEET: 1 OF 1