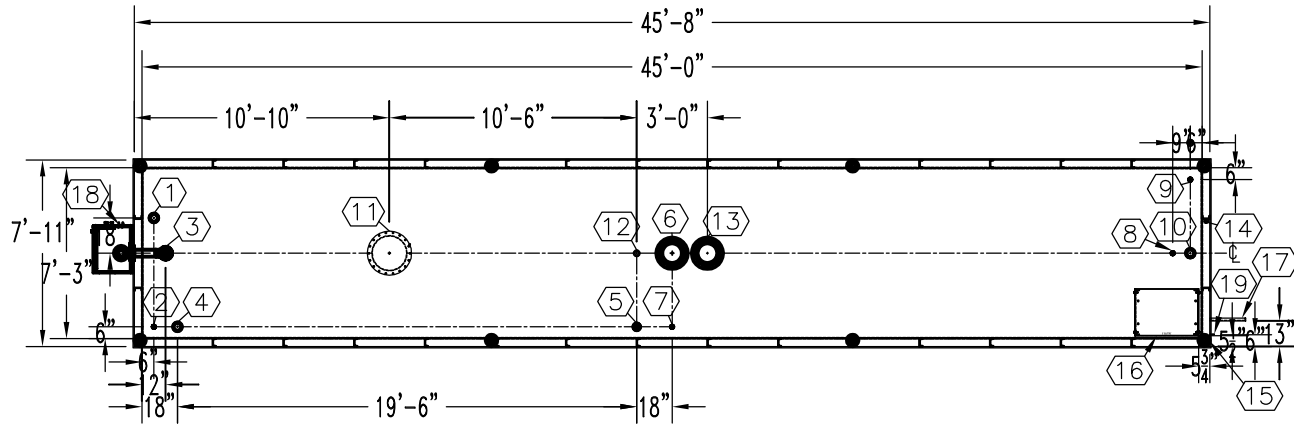


NOTE:
 OVERALL SHIPPING DIMENSION: 49'-8" L X 8'-6" W X 9'-4" H

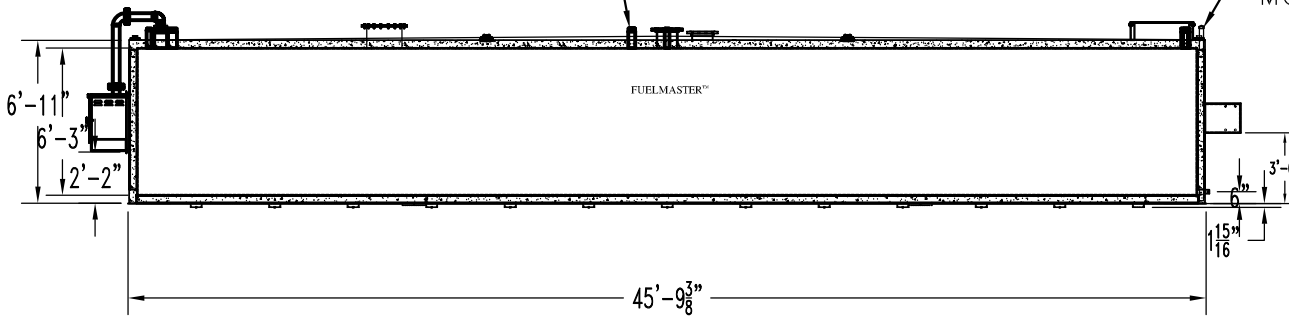


ITEM	SIZE	SUGGESTED FUNCTION
1	4"	PHASE 1 VAPOR RECOVERY/SPARE
2	2"	CLOCK LEVEL GAUGE
3	6"	FILL W/3" FILL LIMITER
4	4"	ELECTRONIC LEVEL GAUGE (OPTIONAL)
5	3"	PRIMARY WORKING VENT W/RISER PIPE
6	10"	PRIMARY TANK EMERGENCY VENT
7	2"	SPARE
8	2"	SUCTION PUMP
9	2"	HIGH LEVEL ALARM
10	4"	SPARE
11	18"	ABOVE LIQUID MANHOLE, DWG."MHB001"
12	2"	SECONDARY WORKING VENT
13	10"	SECONDARY CONTAINMENT EMERGENCY VENT
14	2"	SECONDARY MONITOR PIPE
15	4"	FIRE RATED MATERIAL FILL
16	N/A	9822 DISPENSER BRACKET, DWG."PBB015"
17	N/A	DISPENSER BRACKET, DWG."DSB001"
18	3" PIPE	MORRISON 3QBB REMOTE FILL BOX, DWG."SBB202"
19	2" X 2"	GROUND CLIP, DWG."MCB004"

TANK SPECIFICATIONS

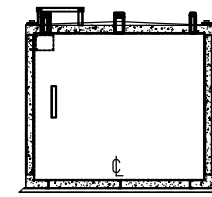
VENTING CAPACITY: PRIMARY TANK - 493,000 CUBIC FEET PER HOUR
 SECONDARY TANK - 524,000 CUBIC FEET PER HOUR
 MATERIAL: PRIMARY TANK - 1/4" THICK
 SECONDARY TANK - 3/16" THICK

TOP VIEW
 THREADED CONNECTION (TYP.) SEE TOP VIEW



ELEVATION

2" STD. PIPE FOR MONITOR ACCESS
 SEAL WELD ALL FITTINGS AND TANK
 4" SPACE BETWEEN INNER & OUTER TANKS FILLED WITH LIGHT WEIGHT FIRE-RATED MATERIAL



END VIEW

PRODUCT CODE	GALLONS	DESCRIPTION	OVERALL SIZE	SHIP WT.
FMAA115MVS001	15,000	U/L-2085 ABOVE GROUND VAULT TANK W/FUEL SYSTEM	45'-8" L X 7'-11" W X 7'-1" H	61,200 LBS.



THIS DRAWING AND DESIGN SHOWN HEREIN IS THE PROPERTY OF CONTAINMENT SOLUTIONS. USE OR COPIES THEREOF CANNOT BE MADE WITHOUT WRITTEN CONSENT.

CUSTOMER NAME: _____
APPROVED BY: _____ DATE: _____

DRAWN BY: D. ROVANG DATE DRAWN: 01-01-14
 DWG NUMBER: 5103553 SCALE: 1:96
 REV: _____ REV BY: _____ DATE: _____ SHEET: 1 OF 1