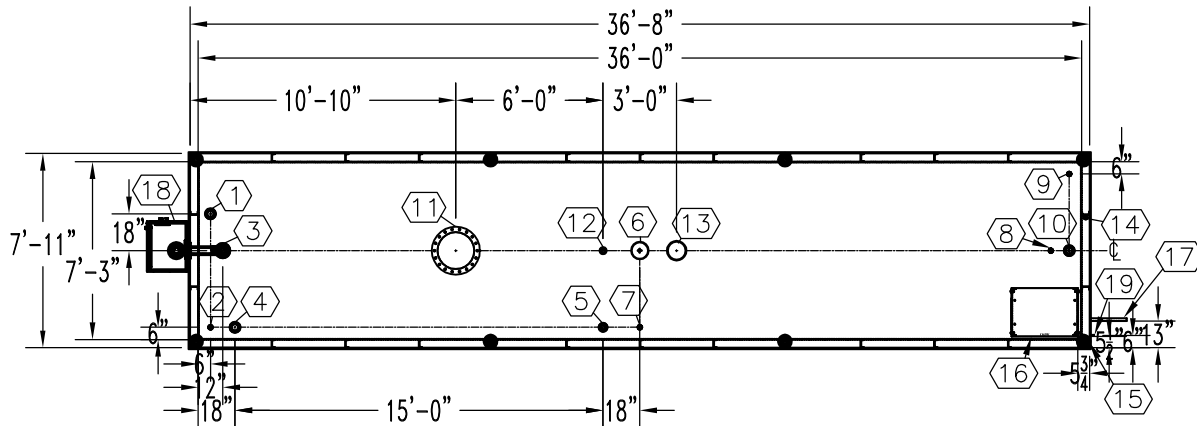


NOTE:
OVERALL SHIPPING DIMENSION: 40'-8" L X 8'-6" W X 9'-4" H



| ITEM | SIZE | SUGGESTED FUNCTION |
|------|---------|---|
| 1 | 4" | PHASE 1 VAPOR RECOVERY/SPARE |
| 2 | 2" | CLOCK LEVEL GAUGE |
| 3 | 6" | FILL W/3" FILL LIMITER |
| 4 | 4" | ELECTRONIC LEVEL GAUGE (OPTIONAL) |
| 5 | 3" | PRIMARY WORKING VENT W/RISER PIPE |
| 6 | 8" | PRIMARY TANK EMERGENCY VENT |
| 7 | 2" | SPARE |
| 8 | 2" | SUCTION PUMP |
| 9 | 2" | HIGH LEVEL ALARM |
| 10 | 4" | SPARE |
| 11 | 18" | ABOVE LIQUID MANHOLE, DWG."MHB001" |
| 12 | 2" | SECONDARY WORKING VENT |
| 13 | 8" | SECONDARY CONTAINMENT EMERGENCY VENT |
| 14 | 2" | SECONDARY MONITOR PIPE |
| 15 | 4" | FIRE RATED MATERIAL FILL |
| 16 | N/A | 9822 DISPENSER BRACKET, DWG."PBB015" |
| 17 | N/A | DISPENSER BRACKET, DWG."DSB001" |
| 18 | 3" PIPE | MORRISON 3QBB REMOTE FILL BOX, DWG."SBB202" |
| 19 | 2" X 2" | GROUND CLIP, DWG."MCB004" |

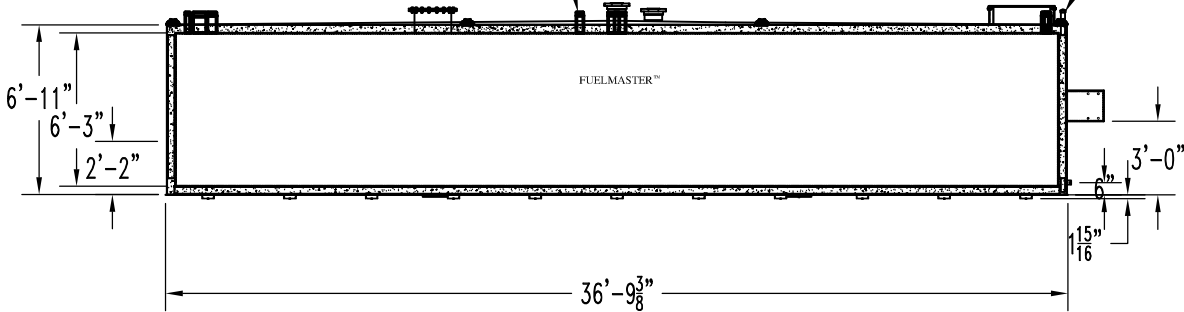
TANK SPECIFICATIONS

VENTING CAPACITY: PRIMARY TANK - 462,600 CUBIC FEET PER HOUR
 SECONDARY TANK - 496,300 CUBIC FEET PER HOUR

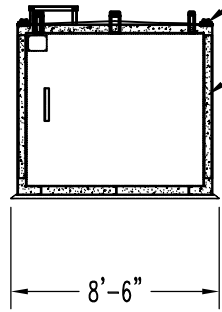
MATERIAL: PRIMARY TANK - 1/4" THICK
 SECONDARY TANK - 3/16" THICK

2" STD. PIPE FOR MONITOR ACCESS
 SEAL WELD ALL FITTINGS AND TANK
 4" SPACE BETWEEN INNER & OUTER TANKS FILLED WITH LIGHT WEIGHT FIRE-RATED MATERIAL

TOP VIEW
 THREADED CONNECTION (TYP.) SEE TOP VIEW



ELEVATION



END VIEW

| PRODUCT CODE | GALLONS | DESCRIPTION | OVERALL SIZE | SHIP WT. |
|---------------|---------|--|-------------------------------|-------------|
| FMAA112MVS001 | 12,000 | U/L-2085 ABOVE GROUND VAULT TANK W/FUEL SYSTEM | 36'-8" L X 7'-11" W X 7'-1" H | 49,550 LBS. |



THIS DRAWING AND DESIGN SHOWN HEREIN IS THE PROPERTY OF CONTAINMENT SOLUTIONS. USE OR COPIES THEREOF CANNOT BE MADE WITHOUT WRITTEN CONSENT.

CUSTOMER NAME: _____
APPROVED BY: _____ DATE: _____

DRAWN BY: D. ROVANG DATE DRAWN: 01-01-14
 DWG NUMBER: 5103552 SCALE: 1:96
 REV: _____ REV BY: _____ DATE: _____ SHEET: 1 OF 1