

FLOWTITE PRODUCTS

SEPTIC / WASTE WATER

NOTE: CUSTOMER SUPPLIED
"ASTM C-1644" APPROVED
FLEXIBLE PIPING COUPLING
REQUIRED ON TANGENTIALLY
MTD. NOZZLES, & PIPES

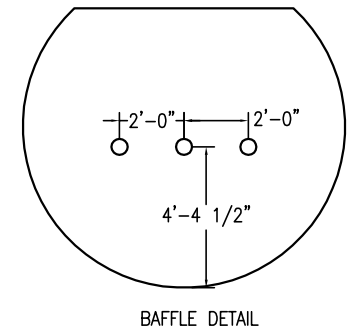
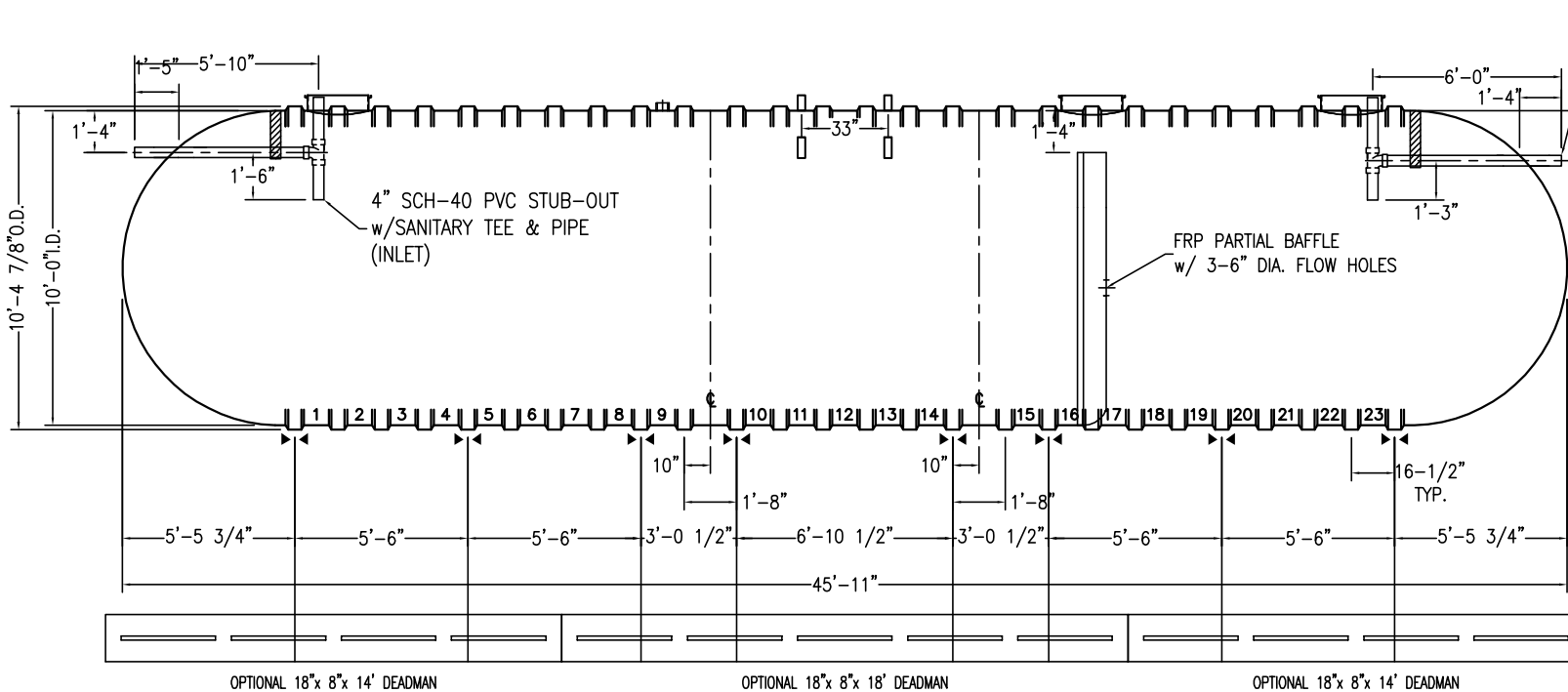
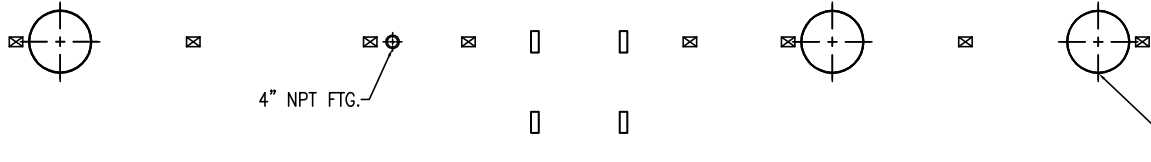
SHELL CODES: 2-EXS10SD, 1-OXS06SD



THIS IS AN IAPMO APPROVED TANK
THE ONLY CHANGE ALLOWED TO
THIS TANK IS TO INCREASE THE
INLET AND OUTLET PIPE DIAMETER.
MFG. PER. PE-C22.85

CAPACITIES:

LIQUID VOLUME BELOW OUTLET = 22,115 GALS
AIR VOLUME ABOVE OUTLET = 2,855 GALS



NOTES:

- ☒ HOLD DOWN STRAP CLIP
- ▶◀ HOLD DOWN STRAP LOCATION
- TYPE "13" LIFT LUG - SD
- TYPE "13" LIFT LUG - HD

SWT D-6 (10')-25000		DATE:	1/1/2014
IAPMO SEPTIC TANK		DRAWN BY:	J.HARMON
CONTAINMENT SOLUTIONS	CAPACITY:	24,970	
	WEIGHT: DRY/WET	7550	
		REVISED:	
		DWG NUMBER:	1025SW-IS