

SHELL CODES: 2-EXD10SD, 1-OXD06SD

22" FLGD. MANWAY
w/3-4" NPT FTGS.

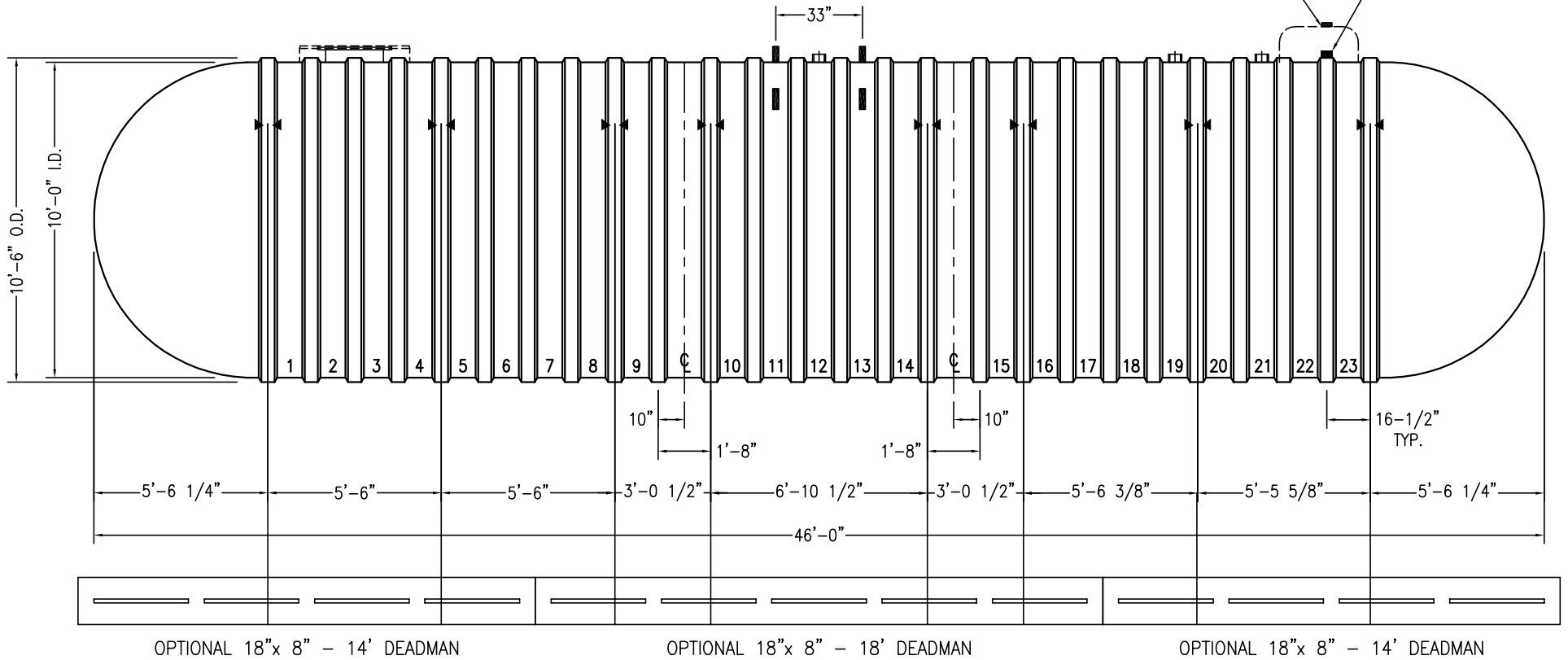
OPTIONAL 42" CONTAINMENT COLLAR

8"R

4" NPT FTGS. (3 TYP.)

OPTIONAL R-41 RESERVOIR

4" ANNULAR SPACE FTG.



NOTES:

- ☒ HOLD DOWN STRAP CLIP
- ▶◀ HOLD DOWN STRAP LOCATION
- TYPE "13" LIFT LUG - SD
- TYPE "13" LIFT LUG - HD

DWT-6 TYPE II (10')-25000		DATE: 1/1/2014
		DRAWN BY: K.A.SOEDER
CONTAINMENT SOLUTIONS	CAPACITY: 24,970	REVISED:
	WEIGHT: DRY/WET 12250/17100	DWG NUMBER: 1025DW6S