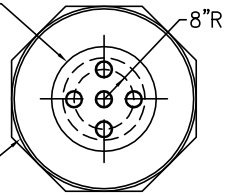


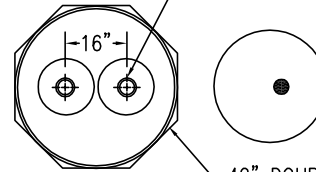


22" FLGD. MANWAY
w/5-4" NPT FTGS.



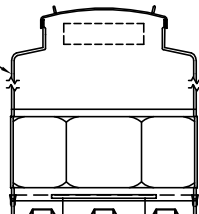
48" DOUBLE WALL CONTAINMENT COLLAR

4" NPT FTGS. (2 TYP.)

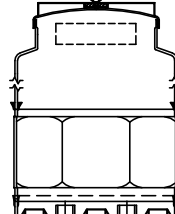


42" DOUBLE WALL CONTAINMENT COLLAR

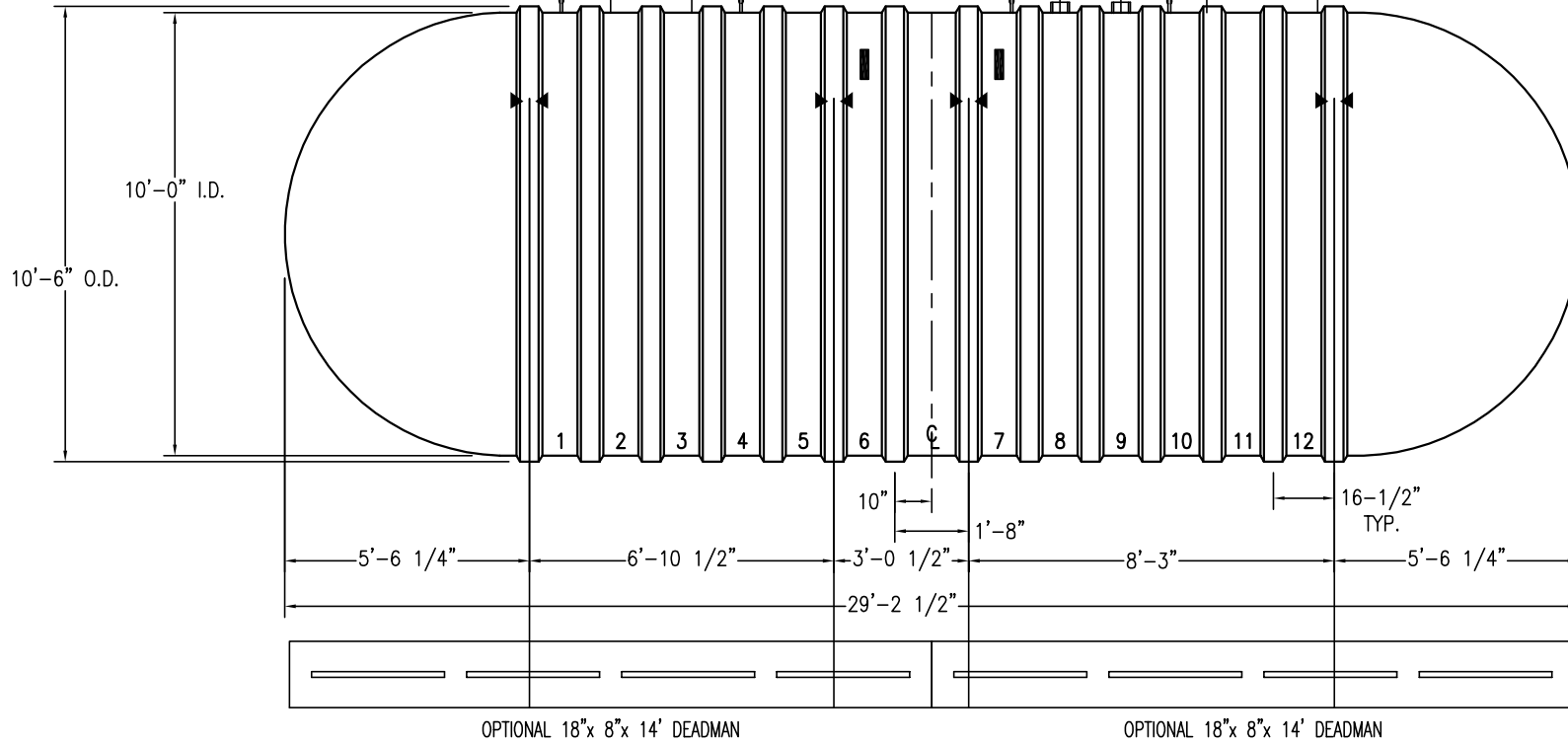
DW PTS (WT34) 48/8-4'
WATERTIGHT TANK SUMP



DW PTS (WT34) (FV2/15/16)
42/8-4' WATERTIGHT TANK SUMP



HYDROSTATIC RESERVOIR



OPTIONAL 18"x 8"x 14' DEADMAN

OPTIONAL 18"x 8"x 14' DEADMAN

NOTES:

- ▶◀ HOLD DOWN STRAP LOCATION
- TYPE "13" LIFT LUG - SD
- TYPE "13" LIFT LUG - HD

HYDROGUARD (10')-15000		DATE: 1/1/2014
		DRAWN BY: K.A.SOEDER
	CAPACITY: 15,104	REVISED:
	WEIGHT: 10500	DWG NUMBER: 1015DW-HG