

FLOWTITE PRODUCTS

SEPTIC / WASTE WATER

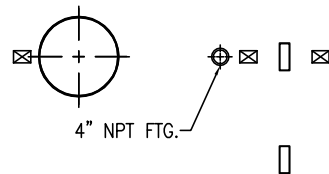
NOTE: CUSTOMER SUPPLIED
"ASTM C-1644" APPROVED
FLEXIBLE PIPING COUPLING
REQUIRED ON TANGENTIALLY
MTD. NOZZLES, & PIPES

SHELL CODES: 2-EXS05SD

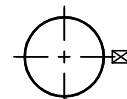


THIS IS AN IAPMO APPROVED TANK
THE ONLY CHANGE ALLOWED TO
THIS TANK IS TO INCREASE THE
INLET AND OUTLET PIPE DIAMETER.
MFG. PER. PE-C22.85

CAPACITIES:
LIQUID VOLUME BELOW OUTLET = 10,440 GALS
AIR VOLUME ABOVE OUTLET = 1,262 GALS



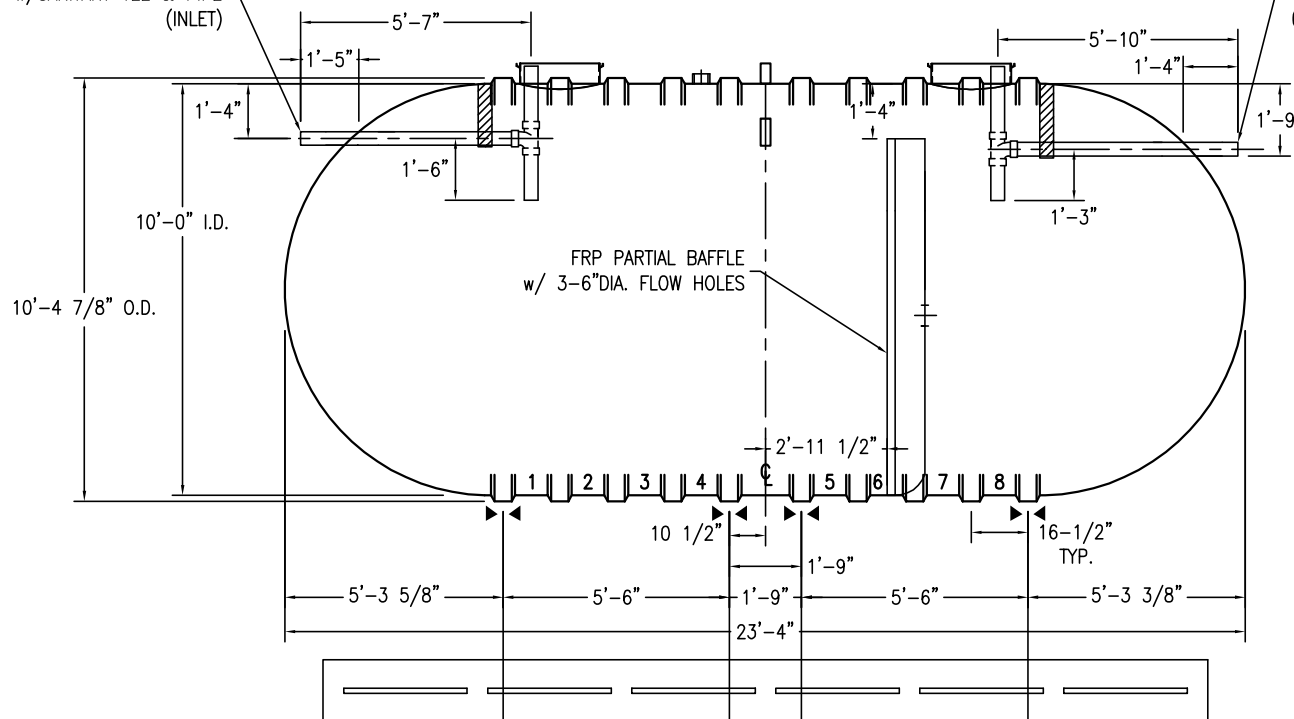
4" NPT FTG.



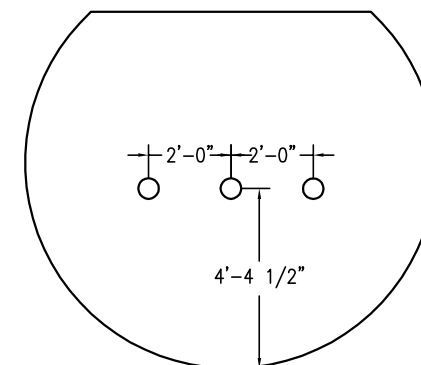
(24") 23-1/2" O.D. FRP ACCESS COLLAR
w/ADHESIVE CHANNEL & 22 1/2"
TANK TOP CUT-OUT (2 TYP.)

4" SCH-40 PVC STUB-OUT
w/SANITARY TEE & PIPE
(INLET)

4" SCH-40 PVC STUB-OUT
w/SANITARY TEE & PIPE
(OUTLET)



OPTIONAL 18"x 8"x 22' DEADMAN



BAFFLE DETAIL

NOTES:

- ☒ HOLD DOWN STRAP CLIP
- ▶◀ HOLD DOWN STRAP LOCATION
- TYPE "13" LIFT LUG - SD
- TYPE "13" LIFT LUG - HD

SWT D-6 (10')-12000		DATE:	1/1/2014
IAPMO SEPTIC TANK		DRAWN BY:	J.HARMON
CONTAINMENT SOLUTIONS	CAPACITY:	11,702	REVISED:
	WEIGHT: DRY/WET	4000	DWG NUMBER:
			1012MSW-IS