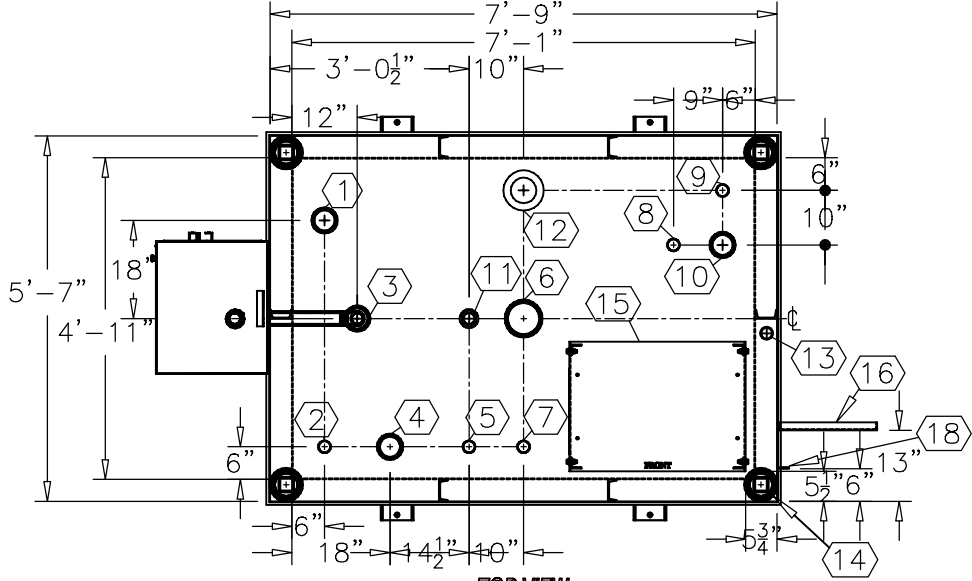


NOTE:
OVERALL SHIPPING DIMENSION: 11'-9" L X 6'-2" W X 7'-0" H

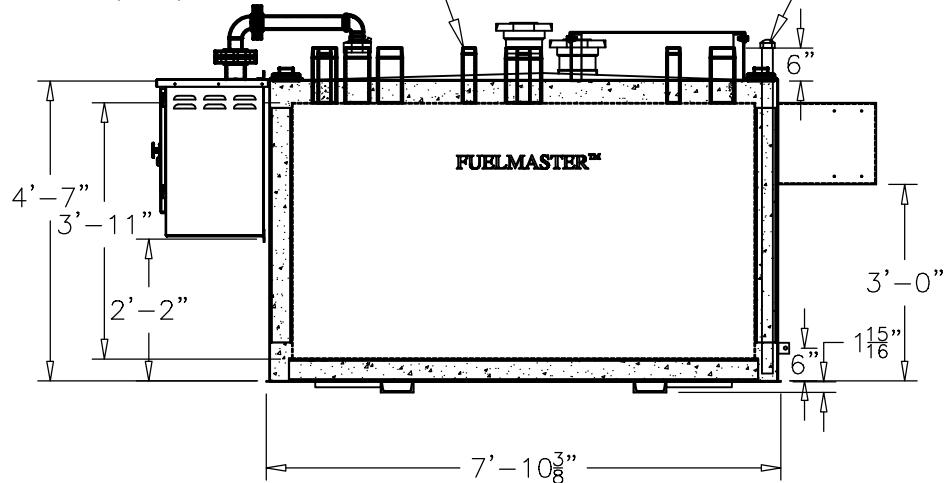


TOP VIEW

ITEM	SIZE	SUGGESTED FUNCTION
1	4"	PHASE 1 VAPOR RECOVERY/SPARE
2	2"	CLOCK LEVEL GAUGE
3	4"	FILL W/2" FILL LIMITER
4	4"	ELECTRONIC LEVEL GAUGE (OPTIONAL)
5	2"	PRIMARY WORKING VENT W/RISER PIPE
6	6"	PRIMARY TANK EMERGENCY VENT
7	2"	SPARE
8	2"	SUCTION PUMP
9	2"	HIGH LEVEL ALARM
10	4"	SPARE
11	2"	SECONDARY WORKING VENT
12	6"	SECONDARY CONTAINMENT EMERGENCY VENT
13	2"	SECONDARY MONITOR PIPE
14	4"	FIRE RATED MATERIAL FILL
15	N/A	9822 DISPENSER BRACKET, DWG."PBB015"
16	N/A	DISPENSER BRACKET, DWG."DSB001"
17	2" PIPE	MORRISON 2QBB REMOTE FILL BOX, DWG."SBB201"
18	2" X 2"	GROUND CLIP, DWG."MCB004"

THREADED CONNECTION
 (TYP.) SEE TOP VIEW

2" STD. PIPE FOR
 MONITOR ACCESS

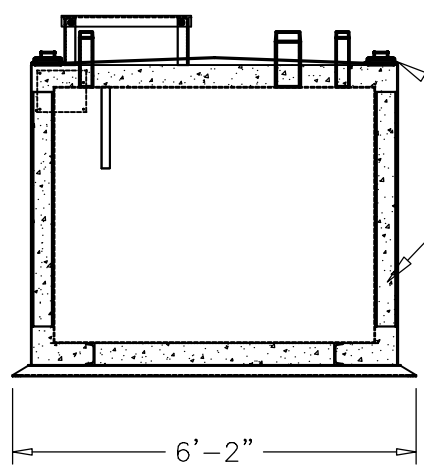


ELEVATION

TANK SPECIFICATIONS

VENTING CAPACITY: PRIMARY TANK - 147,000 CUBIC FEET PER HOUR
 SECONDARY TANK - 190,000 CUBIC FEET PER HOUR
 MATERIAL: PRIMARY TANK - 3/16" THICK
 SECONDARY TANK - 3/16" THICK

SEAL WELD ALL
 FITTINGS AND TANK
 4" SPACE BETWEEN
 INNER & OUTER TANKS
 FILLED WITH LIGHT WEIGHT
 FIRE-RATED MATERIAL



END VIEW

PRODUCT CODE	GALLONS	DESCRIPTION	OVERALL SIZE	SHIP WT.
FMAA101MVS001	1,000	U/L-2085 ABOVE GROUND VAULT TANK W/FUEL SYSTEM	7'-9" L X 5'-7" W X 4'-9" H	9,300 LBS.

THIS DRAWING AND DESIGN SHOWN HEREIN IS THE PROPERTY OF CONTAINMENT SOLUTIONS. USE OR COPIES THEREOF CANNOT BE MADE WITHOUT WRITTEN CONSENT.

CUSTOMER NAME: _____
APPROVED BY: _____ DATE: _____

CONTAINMENT SOLUTIONS®

DRAWN BY: D. ROVANG DATE DRAWN: 01-01-14
 DWG NUMBER: 5103542 SCALE: 1:36
 REV: REV BY: DATE: SHEET: 1 OF 1