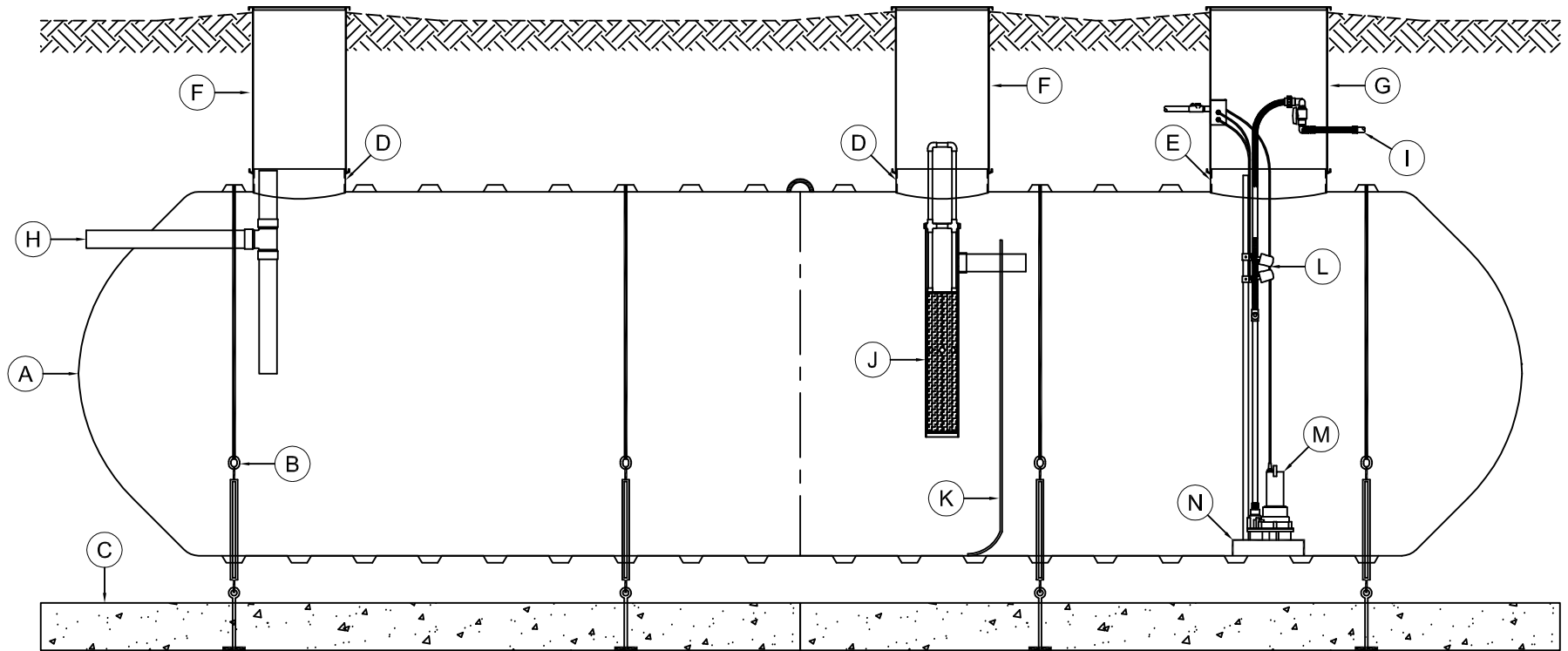


MARK	EQUIPMENT LISTING AND SUPPLIER	CSI	CUSTOMER	MARK	EQUIPMENT LISTING AND SUPPLIER	CSI	CUSTOMER
A	C.S.I. SINGLE WALL FIBERGLASS TANK	X		H	4" PVC INLET PIPING WITH SANITARY TEE	X	
B	C.S.I. FRP HOLD DOWN STRAP & TURNBUCKLE ASSEMBLY	X		I	EFFLUENT DISCHARGE		X
C	C.S.I. PRECAST DEADMAN ANCHOR WITH EYEBOLTS	X		J	SUSPENDED EFFLUENT FILTER WITH 4" TRANSFER PIPE		X
D	24" FRP COLLAR WITH TANK ACCESS OPENING	X		K	7/8" HEIGHT COMPARTMENT Baffle	X	
E	30" FRP COLLAR WITH TANK ACCESS OPENING	X		L	PUMP AND LEVEL CONTROL ASSEMBLY		X
F	24" FRP RISER WITH ACCESS LID	X		M	SUBMERSIBLE EFFLUENT PUMP		X
G	30" FRP RISER WITH ACCESS LID	X		N	24"x 24" FIBERGLASS PUMP PLATFORM	X	



THIS DRAWING IS FOR ILLUSTRATIVE PURPOSES ONLY. IT IS THE RESPONSIBILITY OF THE PURCHASER AND/OR ENGINEER TO DESIGN A SYSTEM IN COMPLIANCE WITH ALL GOVERNING MUNICIPAL CODES.

### TYPICAL ILLUSTRATION DRAWING DUAL LARGE COMMERCIAL ONSITE SEPTIC SUBMERSIBLE EFFLUENT PUMP SYSTEM

