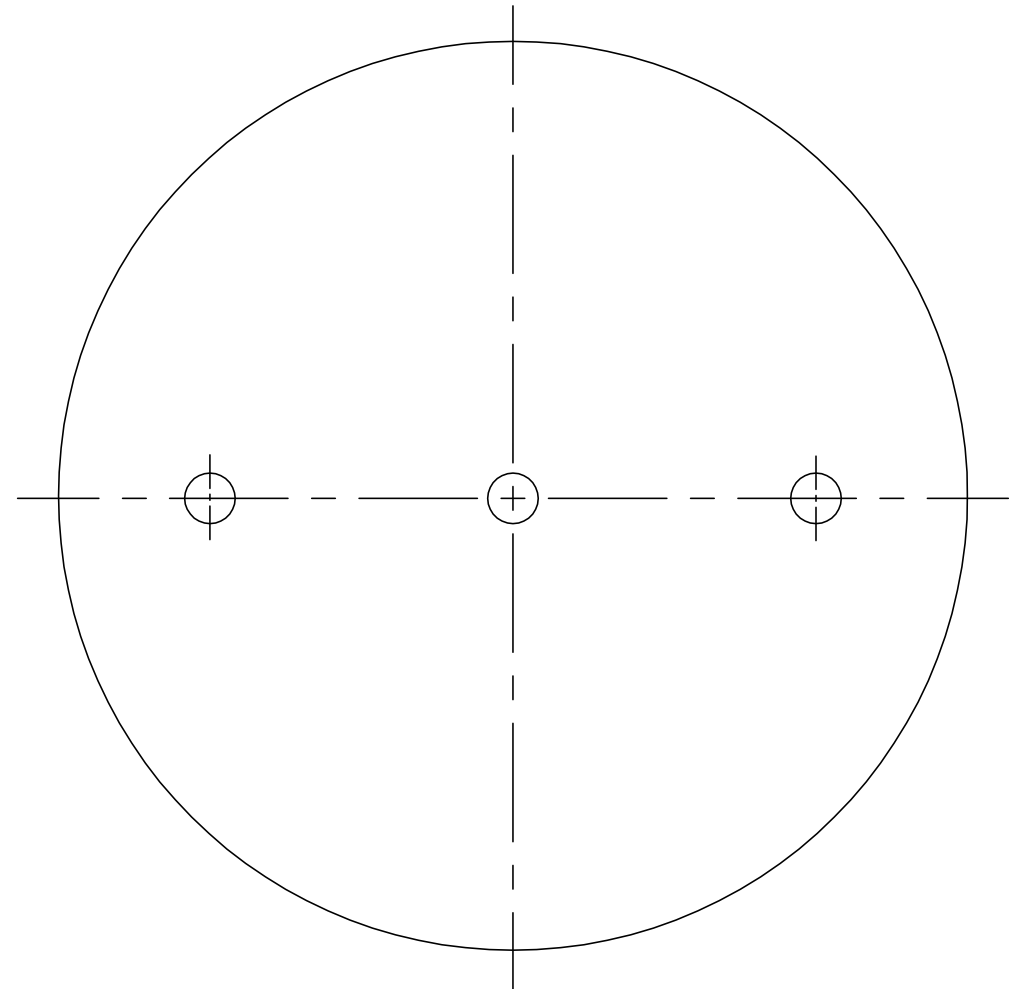
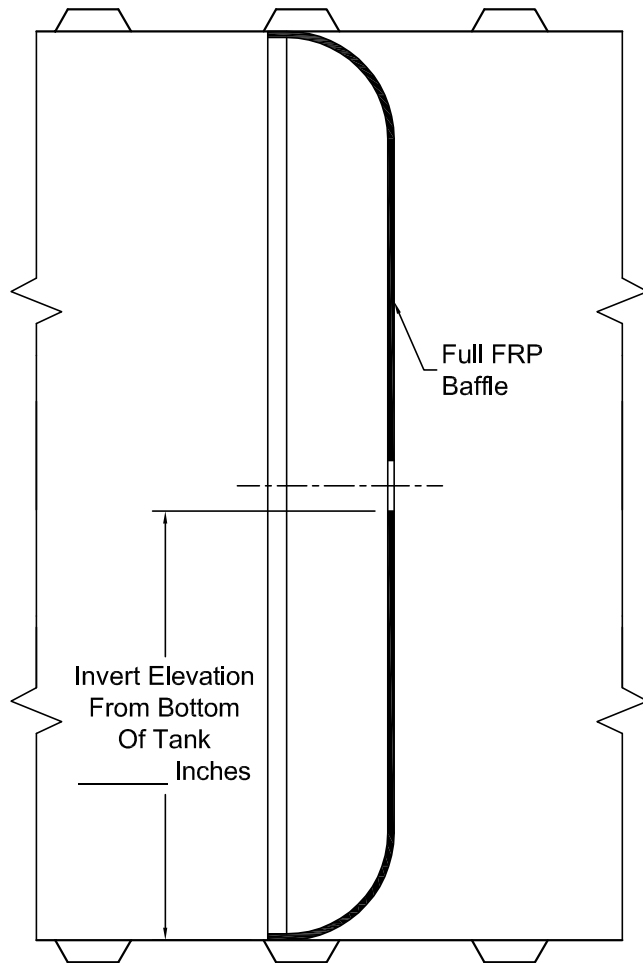


Full Fiberglass Baffle

(With Flow-Through Hole(s))

Note: All Full Baffles Must Have A Minimum Of One Crossover.



Baffle Crossover Will Be: Flow-Through Hole(s)
 Crossover Piping

If Using Flow-Through Holes: Diameter Of Hole(s)
 Quantity Of Hole(s)

If Using Crossover Piping Complete Dimension Requirements



CONTAINMENT
SOLUTIONS[®]