

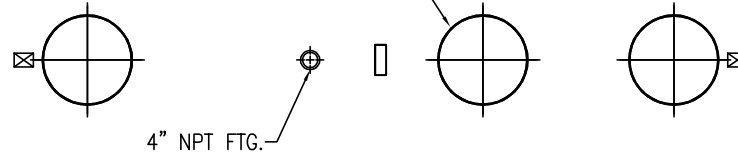
FLOWTITE PRODUCTS

SEPTIC / WASTE WATER

NOTE: CUSTOMER SUPPLIED
"ASTM C-1644" APPROVED
FLEXIBLE PIPING COUPLING
REQUIRED ON TANGENTIALLY
MTD. NOZZLES, & PIPES

SHELL CODES: 2-E8S06SD

(24") 23-1/2" O.D. FRP ACCESS COLLAR
w/ADHESIVE CHANNEL &
22 1/2" TANK TOP CUT-OUT(3 TYP.)



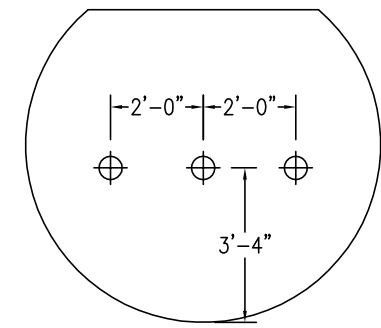
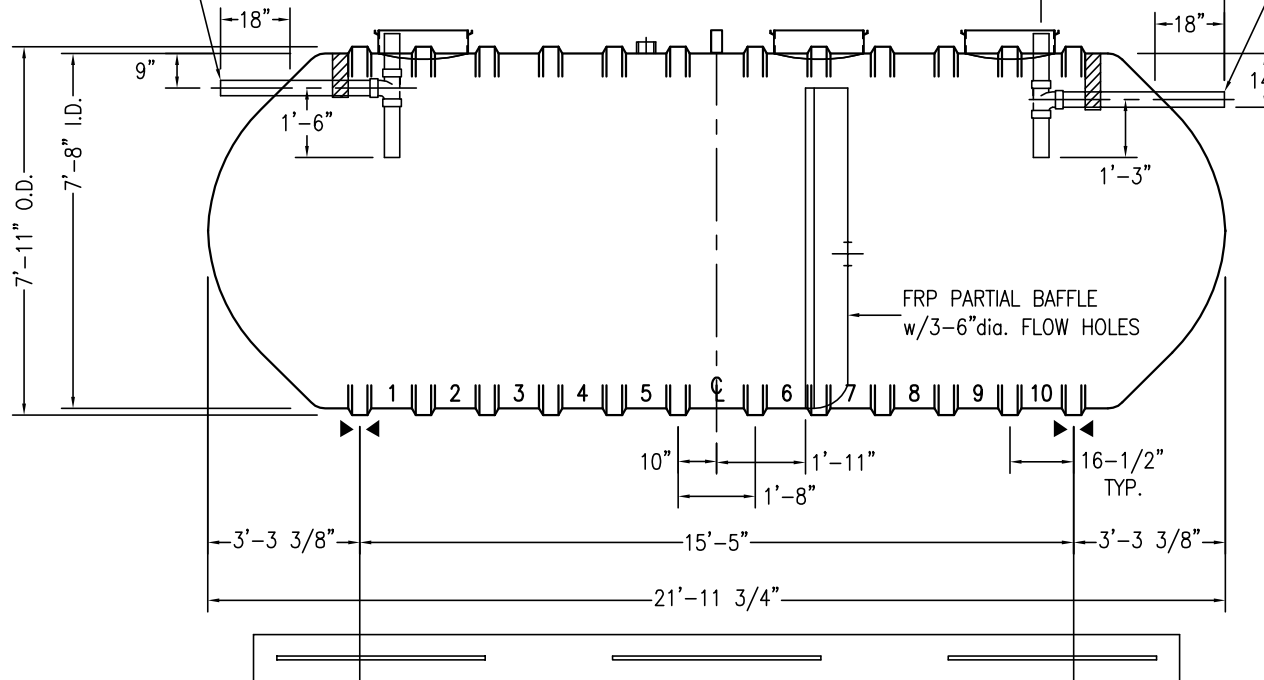
THIS IS AN IAPMO APPROVED TANK
THE ONLY CHANGE ALLOWED TO
THIS TANK IS TO INCREASE THE
INLET AND OUTLET PIPE DIAMETER.
MFG. PER. PE-C22.85

CAPACITIES:

LIQUID VOLUME BELOW OUTLET = 6157 GALS
AIR VOLUME ABOVE OUTLET = 626 GALS

4" SCH-40 PVC STUB-OUT
w/SANITARY TEE & PIPE
(INLET)

6" SCH-40 PVC STUB-OUT
w/SANITARY TEE & PIPE
(OUTLET)



BAFFLE DETAIL

OPTIONAL 12"x 12"x 20' DEADMAN

NOTES:

- ☒ HOLD DOWN STRAP CLIP
- ▶◀ HOLD DOWN STRAP LOCATION
- TYPE "13" LIFT LUG - SD
- TYPE "13" LIFT LUG - HD

SWT G-6 (8')-7000		DATE:	1/1/2014
IAPMO SEPTIC TANK		DRAWN BY:	K.A.SOEDER
CONTAINMENT SOLUTIONS	CAPACITY:	6,783	
	WEIGHT: DRY/WET	2250	
		REVISED:	
		DWG NUMBER:	87MSW-IS