

24" ABOVE LIQUID MANHOLE 12 3/8" TALL

(24) 9/16" DIA. HOLE
ON 27" BOLT CIRCLE

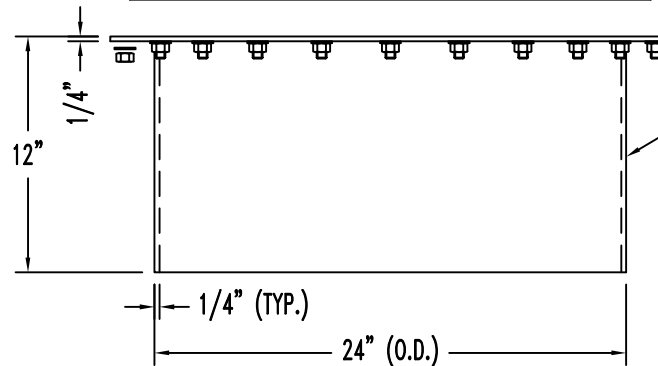
28 1/2" DIA. COVER

STAINLESS STEEL FASTENER

TOP VIEW

COVER
GASKET

1/4"



24" MANHOLE WITH
COVER AND GASKET

12"

1/4"

1/4" (TYP.)

24" (O.D.)

ELEVATION

NOTES:

1. MANHOLE ASSEMBLY SHALL BE CARBON STEEL.
2. ALL FASTENERS SHALL BE STAINLESS STEEL.
3. GASKET SHALL BE INSTALLED WITH MANHOLE COVER.
4. GASKET SPECIFICATIONS:
CORK AND NITRILE RUBBER
1/8" THK. X 24" I.D. X 28 1/2" O.D.
5. EXTERIOR COATING SHALL BE THE SAME AS TANK, UNLESS NOTED.

PRODUCT CODE	GALLONS	DESCRIPTION	OVERALL SIZE	SHIP WT.
MHB002		24" U/L ABOVE LIQUID MANWAY	28 1/2" DIA. X 12" H	82 LBS.

THIS DRAWING AND DESIGN SHOWN HEREIN IS THE PROPERTY OF CONTAINMENT SOLUTIONS. USE OR COPIES THEREOF CANNOT BE MADE WITHOUT WRITTEN CONSENT.

CUSTOMER NAME

APPROVED BY:

DATE:

CONTAINMENT
SOLUTIONS®

DRAWN BY: D. ROVANG

DATE DRAWN: 01-01-14

DWG NUMBER: MHB002

SCALE:

REV:

REV BY:

DATE:

SHEET: 1 OF 1