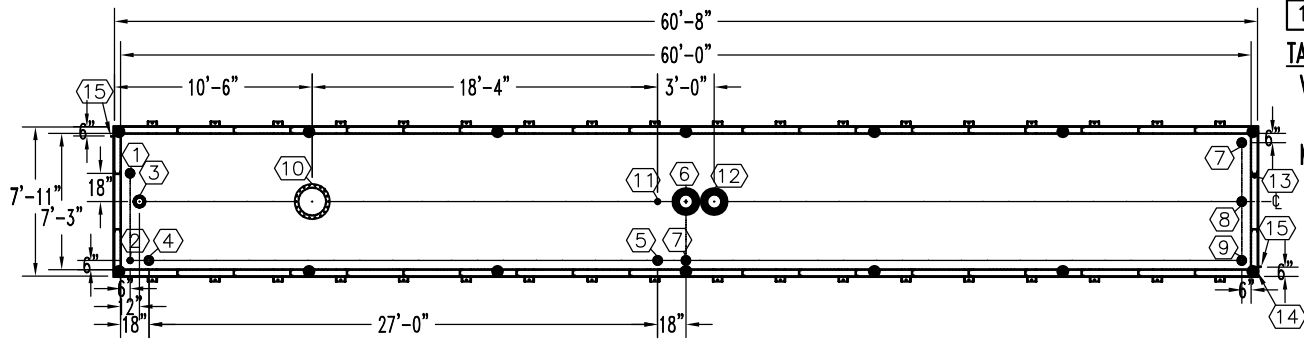


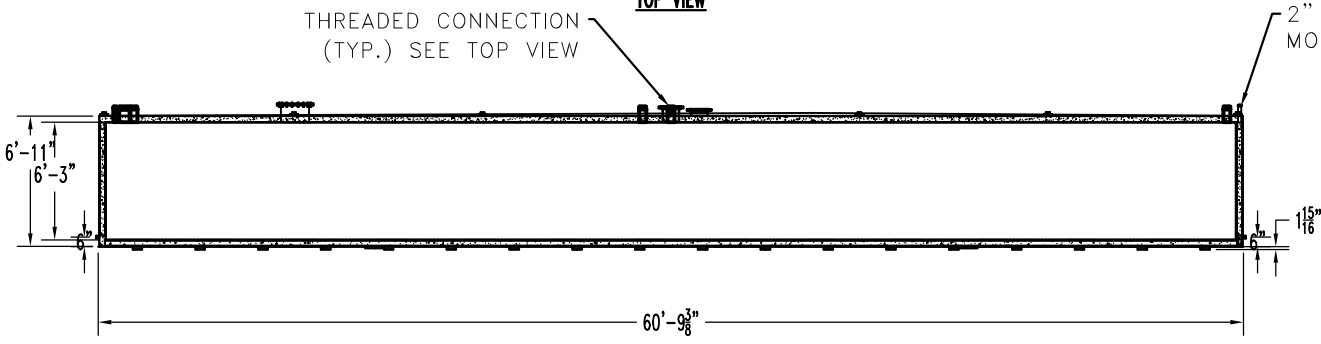
NOTE:
 OVERALL SHIPPING DIMENSION: 61'-1" L X 8'-6" W X 8'-1" H

ITEM	SIZE	SUGGESTED FUNCTION
1	4"	PHASE 1 VAPOR RECOVERY/SPARE
2	2"	MECHANICAL GAUGE
3	6"	FILL
4	4"	ELECTRONIC LEVEL GAUGE
5	4"	PRIMARY WORKING VENT
6	10"	PRIMARY TANK EMERGENCY VENT
7	4"	SPARE
8	4"	SUBMERSIBLE PUMP
9	4"	SUCTION PUMP/SPARE
10	18"	ABOVE LIQUID MANHOLE, DWG."MHB001"
11	2"	SECONDARY WORKING VENT
12	10"	SECONDARY CONTAINMENT EMERGENCY VENT
13	2"	SECONDARY MONITOR PIPE
14	4"	FIRE RATED MATERIAL FILL
15	2" X 2"	GROUND CLIP, DWG."MCB004"



TOP VIEW

THREADED CONNECTION
 (TYP.) SEE TOP VIEW

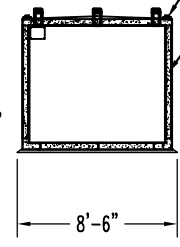


ELEVATION

2" STD. PIPE FOR
 MONITOR ACCESS

SEAL WELD ALL
 FITTINGS AND TANK

4" SPACE BETWEEN
 INNER & OUTER TANKS
 FILLED WITH LIGHT WEIGHT
 FIRE-RATED MATERIAL



END VIEW

TANK SPECIFICATIONS

VENTING CAPACITY: PRIMARY TANK - 493,000 CUBIC FEET PER HOUR
 SECONDARY TANK - 524,000 CUBIC FEET PER HOUR
 MATERIAL: PRIMARY TANK - 1/4" THICK
 SECONDARY TANK - 3/16" THICK

PRODUCT CODE	GALLONS	DESCRIPTION	OVERALL SIZE	SHIP WT.
V4AA120MVS05	20,000	U/L-2085 ABOVE GROUND VAULT TANK	60'-8" L X 7'-11" W X 7'-1" H	77,300 LBS.



THIS DRAWING AND DESIGN SHOWN HEREIN IS THE PROPERTY OF CONTAINMENT SOLUTIONS. USE OR COPIES THEREOF CANNOT BE MADE WITHOUT WRITTEN CONSENT.

CUSTOMER NAME: _____
APPROVED BY: _____ DATE: _____

DRAWN BY: D. ROVANG DATE DRAWN: 09-01-11
 DWG NUMBER: 5104659 SCALE: 1:125
 REV:C REV BY:DAR DATE: 01-01-14 SHEET:1 OF 1