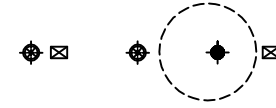
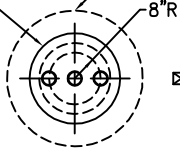


SHELL CODES: 2-EXD10SD, 1-OXD06SD

22" FLGD. MANWAY
w/3-4" C.S. NPT FTGS.
& COVER

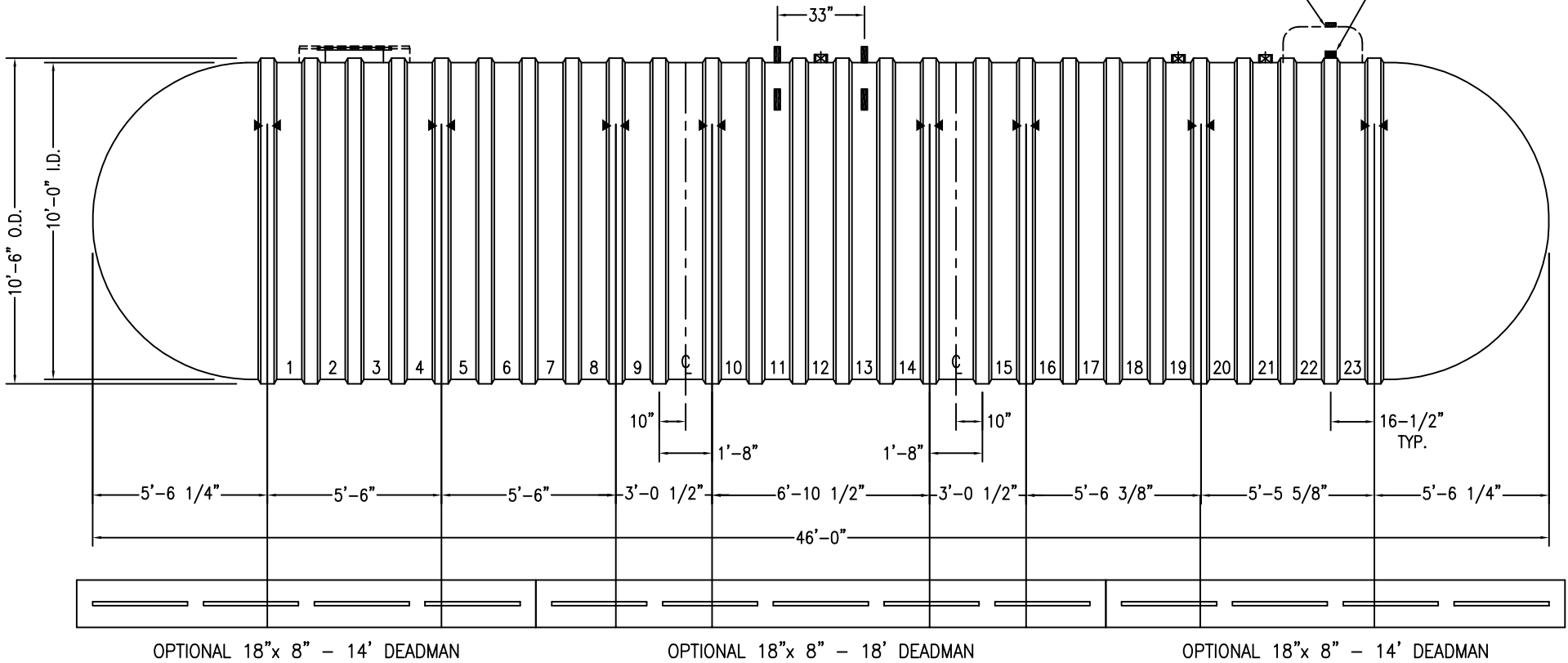
OPTIONAL 42" CONTAINMENT COLLAR

4" FRP NPT FTGS. (3 TYP.)



OPTIONAL R-41 RESERVOIR

4" ANNULAR SPACE FTG.



NOTES:

- ☒ HOLD DOWN STRAP CLIP
- ▶◀ HOLD DOWN STRAP LOCATION
- TYPE "13" LIFT LUG - SD
- TYPE "13" LIFT LUG - HD

DWT-6 TYPE II (10')-25000		DATE: 10/01/18
		DRAWN BY: R.OXNER
CONTAINMENT SOLUTIONS	CAPACITY: 24,970	REVISED:
	WEIGHT: DRY/WET 12250/17100	DWG NUMBER: 10-25DW6F