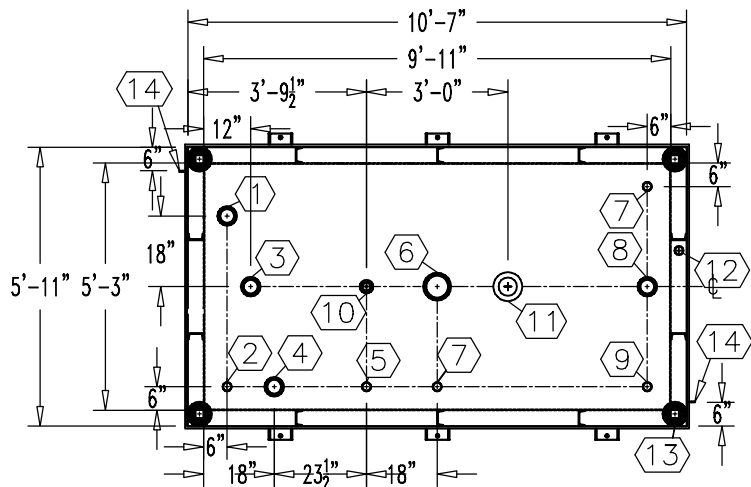


NOTE:
OVERALL SHIPPING DIMENSION: 10'-11" L X 6'-6" W X 5'-7" H



| ITEM | SIZE | SUGGESTED FUNCTION |
|------|---------|--------------------------------------|
| 1 | 4" | PHASE 1 VAPOR RECOVERY/SPARE |
| 2 | 2" | MECHANICAL GAUGE |
| 3 | 4" | FILL |
| 4 | 4" | ELECTRONIC LEVEL GAUGE |
| 5 | 2" | PRIMARY WORKING VENT |
| 6 | 6" | PRIMARY TANK EMERGENCY VENT |
| 7 | 2" | SPARE |
| 8 | 4" | SUBMERSIBLE PUMP |
| 9 | 2" | SUCTION PUMP/SPARE |
| 10 | 2" | SECONDARY WORKING VENT |
| 11 | 6" | SECONDARY CONTAINMENT EMERGENCY VENT |
| 12 | 2" | SECONDARY MONITOR PIPE |
| 13 | 4" | FIRE RATED MATERIAL FILL |
| 14 | 2" X 2" | GROUND CLIP, DWG."MCB004" |

TANK SPECIFICATIONS

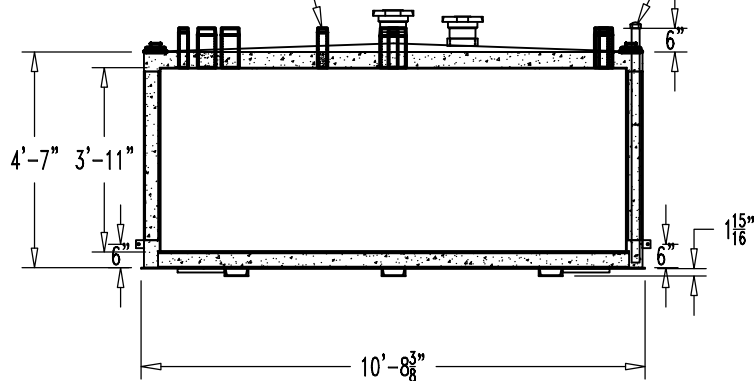
VENTING CAPACITY: PRIMARY TANK - 190,000 CUBIC FEET PER HOUR
 SECONDARY TANK - 239,000 CUBIC FEET PER HOUR

MATERIAL: PRIMARY TANK - 3/16" THICK
 SECONDARY TANK - 3/16" THICK

THREADED CONNECTION (TYP.) SEE TOP VIEW

TOP VIEW

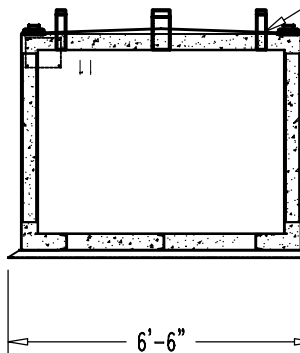
2" STD. PIPE FOR MONITOR ACCESS



ELEVATION

SEAL WELD ALL FITTINGS AND TANK

4" SPACE BETWEEN INNER & OUTER TANKS FILLED WITH LIGHT WEIGHT FIRE-RATED MATERIAL



END VIEW

| PRODUCT CODE | GALLONS | DESCRIPTION | OVERALL SIZE | SHIP WT. |
|---------------|---------|----------------------------------|-------------------------------|-------------|
| V4AA115CVS000 | 1,500 | U/L-2085 ABOVE GROUND VAULT TANK | 10'-7" L X 5'-11" W X 4'-9" H | 10,250 LBS. |

CONTAINMENT SOLUTIONS

THIS DRAWING AND DESIGN SHOWN HEREIN IS THE PROPERTY OF CONTAINMENT SOLUTIONS. USE OR COPIES THEREOF CANNOT BE MADE WITHOUT WRITTEN CONSENT.

CUSTOMER NAME: _____
APPROVED BY: _____ DATE: _____

DRAWN BY: D. ROVANG DATE DRAWN: 01-01-14
 DWG NUMBER: 5100018 SCALE: 1:50
 REV: _____ REV BY: _____ DATE: _____ SHEET: 1 OF 1